

Forest Park Southeast's Community Journal

Issue Number 3

Summer 2005

Summer Comes Full Steam to Adams Park Community Center!

From the Director's Chair:



At Adams Park Community Center (APCC), we are committed to providing programs for all of our neighbors regardless of your income. Our mission is to continue to help residents maintain self-sufficiency, achieve lifelong educational goals, cultivate good health & fitness, & become productive citizens. APCC is an anchor in this community. With help from our many partners, APCC provides a wide variety of programs to serve our neighbors, such as:

- + MERS/Goodwill, providing work readiness & job development skills to all residents interested in permanent employment;
- + Our Seniors Program, providing meals & activities for seniors;
- + Positive Alternative, the public safety initiative connecting neighbors with the police to attack gangs & drugs; and
- + After-School programs, partnering with Adams Elementary & many volunteers to serve our youth every day.

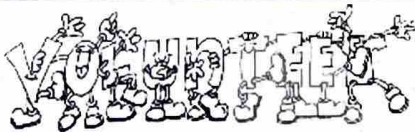
As you can see, APCC is a busy place! See page 7 for details on the programs at APCC and get your family involved! And remember, all of the programs at APCC depend upon you to bring them to life!

We would love to see you!



Youth Employment Program Wraps Up

The Youth Employment Program wrapped up after a fabulous spring semester! Our young men & young ladies cleaned up & beautified the neighborhood, as well as taking advantage of a number of workshops. Our youth learned about managing money, building character, planning for a career, & being ready for a job. Six of our youth graduated from the program in April 2005. Congratulations on a job well done!



At APCC, we need you!

We need volunteers right now to help with:

Science First Hand

We need 25 adult volunteers who like to discover & have fun to help with this 5-week project in June.

Interested? Please contact Ida Roundtree at APCC. Call (314) 633-7900.

Chouteau Bridge Replacement

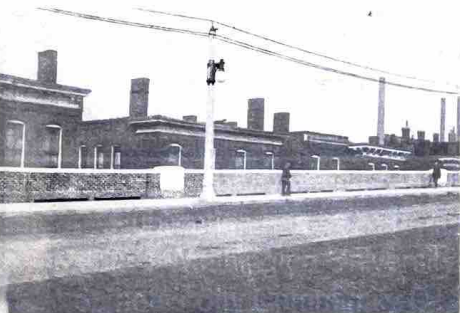
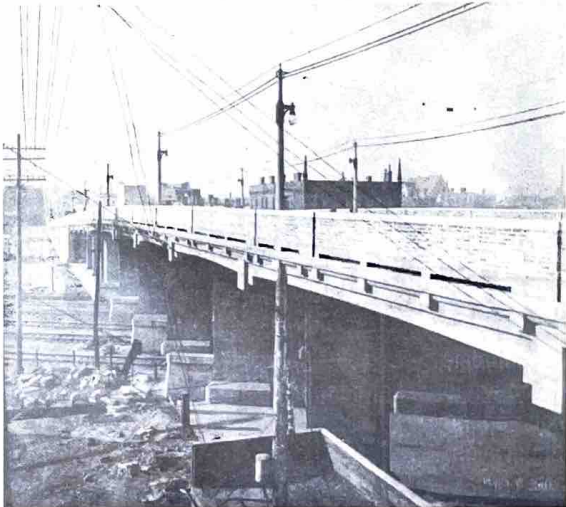
The Missouri Department of Transportation, with contractor KCI Construction Company, will remove & replace the bridge between Vandeventer & 39th St. Crews closed the bridge Feb. 17, 2005.

In 2003, MoDOT agreed to take over work on the Chouteau Bridge from the City of St. Louis. We quickly discovered that the bridge would have to be replaced, as it is nearly 100 years old. The Chouteau Bridge was originally designed as a five-lane structure with sidewalks on both sides. Because of its' severely deteriorated condition, the bridge is not earthquake resistant and traffic was restricted to using two lanes in the center of the bridge. The bridge is heavily used by people in the area on their daily travels. The Chouteau Bridge project includes replacing the bridge & providing sidewalks.

MoDOT & St. Louis City officials have agreed to remove the

Vandeventer overpass bridge, which exits I-64 from the west & enters I-64 to the west. Access to and from I-64 will be through a signalled intersection at Vandeventer. By removing the ramp, the bridge would maintain the same level of service for motorists while reducing cost.

Construction should be done by mid-2006. During construction, the bridge will be closed to traffic, but access to all local businesses will remain. For more info, stay tuned to the website at: <http://www.modot.state.mo.us/> or call MoDOT's Project Manager, Lesley Solinger Hoffarth (340-4392) or City Area Engineer, Deanna Miller (877-0118).



Something to Talk About

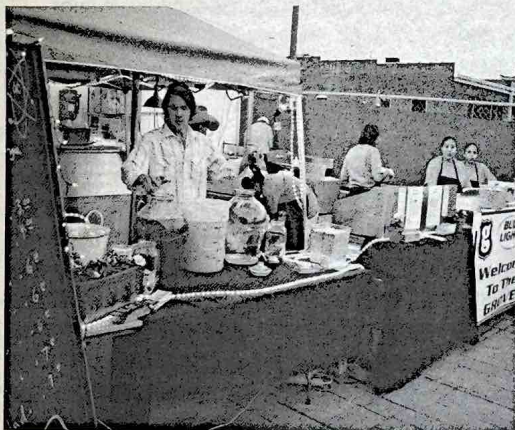
Coming soon: "Atomic Cowboy", 4140 Manchester. The Atomic Cowboy will be relocating to Forest Park Southeast from Maplewood. Atomic Cowboy will feature an outdoor patio, late night meals, a family environment, a creative venue, & music. **Park renovation:** It is time to start planning capital improvements at our pocket parks: Rainbow Park (Taylor & Gibson), Teddy Bear Park (4126 Chouteau), & Adams Park. Funding to implement the parks was provided by Children's Hospital's Healthy Kids at Play Initiative. As part of the donation, the community agreed to take responsibility for long-term maintenance. During the June 6th board meeting of the Development Corporation, we had our initial discussion. **Dog Park:** What is it? Where could one be established? How can it be funded? Why is it needed? This & more must be decided, and was initially discussed during the June 6th FPSEDC board meeting. And remember, it is common courtesy to take responsibility for the disposal of your dog's waste. **Community Garage/Alley Sale:** This fall, we plan to host a Community Garage/Alley Sale. Yes, *alley sale!* It is just like a garage sale, except those who don't have a garage still participate. Bring your old favorites to your garage or parking pad on Saturday, October 1st & Sunday, October 2nd. Yes, two days to get rich on your old STUFF. **Home Showcase:** We had to reschedule the Home Showcase. The new date is September 17th. If you are interested in volunteering your home, serving as a volunteer or assisting with the planning, please contact the Development Corporation office at 314.533.6704 or visit us.

Forest Park South Partnership: The businesses, institutions, & community organizations located south of Highway 40/64 have joined to discuss & implement strategies that improve where we Live, Work, & Learn. This partnership is not designed to replace the existing community groups, but to create a united voice for implementing future change. During our initial discussion, everyone recognized the value in working together. The Planning Committee decided to name the group Forest Park South, and set up the following goals:

- 1) Create a celebration event: "Pulse of St. Louis." Look for more info in the next Community Journal;
- 2) Work with Missouri Department of Transportation (MoDOT) on the realignment of Hwy. 40/64 & public improvements along Oakland (between Kingshighway & Hampton) & Kingshighway (between Hwy. 40/64 & Manchester);
- 3) Improve public safety; and
- 4) Asset Mapping: identify building utilization.

FPSE Community History Workshop: What makes Forest Park Southeast special? Part of the answer is our history—the unique set of people & events that made this place what it is today. To know that history is to know who we are. Many remnants of the past are still visible in the neighborhood; in the factories & railroad tracks that originated in the 1800's, the churches & schools built in the early 1900's, and the homes & shops constructed throughout our history. All of these historical landmarks contain stories that not only help define who we are but also provide guidance in planning for a better future. To commemorate our rich history, the FPSE Development Corporation will collaborate with UMSL to produce a brochure highlighting local landmarks. To kick-off the project we will hold a history workshop late this summer. Anyone interested in the history of Forest Park Southeast is invited. At this meeting we will discuss sites to be included in the brochure. A date has not yet been set, but if you would like to participate, please contact the Development Corporation at 533-6704.

Itinerant women's art show visits Forest Park Southeast, draws 5,000



By Kara Beightel

Excerpted from the West End Word, Wednesday, April 20, 2005

More than 5,000 people flooded Forest Park Southeast April 15 & 16 with one thing on their mind: women. Women singing, women belly dancing, even women modeling magnetic breasts. But it was all about the women. A celebration of women through female-created artwork, Venus Envy took over The Grove, the 4100 block of Manchester Avenue, for its 7th annual event. This year's event was historic for the organization, as it was the 1st time Venus Envy had taken place over 2 nights, as well as in 3 venues. In previous years, Venus Envy has occupied 1 venue on 1 night.

The hospitality of the neighborhood may have helped keep the stress down while preparing for the huge event. Hutchings said many of the neighboring businesses offered use of tents &

parking lots as well as discounts to Venus Envy attendees. The owner of a duplex behind the Atomic Cowboy even offered to let the organization use electric from the building to light the alley behind the three venues, which served as a thoroughfare for attendees.

"The neighborhood really opened its arms up to us," Hutchings said. "We couldn't have asked for a welcome mat to be laid out any better."

The hospitality extends even further. Hutchings said that Venus Envy organizers had been having a tough time finding a venue when the owners of the three venues called them & offered the space at no charge. A previous plan to have a warehouse as the venue fell through, Hutchings said.

Hutchings said she hopes Venus Envy is able to return the favor by introducing its attendees to the neighborhood.

"We draw such a diverse crowd that I'm sure some will come who have never been [to Forest Park Southeast] before," Hutchings said before the event, adding that recent developments in the area might surprise visitors.

Adams Elementary School

The past few months have been very exciting at Adams Elementary School! As students returned from Spring Break, they worked hard on zapping the MAP Test.

I am very pleased to announce that 4th grade students participated in a Mathematics Bowl at the St. Louis Science Center. This effort was sponsored by 4th grade teachers Ms. Betts & Ms. Holland. During this experience the students applied critical thinking skills, basic mathematic facts, & overall team work. They came in 4th place due to their determination & intellect. Congratulations 4th Graders!

Adams students also did extremely well in the St. Louis Public Schools' Annual Science Fair. Here are the results:



- 1st Place: 5th Grade Room #109 - Mr. Collie
 Kindergarten Room #103 - Ms. Jackson
 4th/5th Grade Room #003 - Ms. Pollock/Ms. Clarke
 Kindergarten Room #101 - Ms. White
 4th/5th Grade Room #109 - Ms. Lewis
 Kindergarten Room #102 - Ms. Taylor
- 2nd Place: 3rd Grade Room #201 - Ms. Walls
 2nd Grade Room #208 - Ms. Betts
- 3rd Place: 1st Grade Room #111 - Ms. Crump & Ms. Thames
 4th Grade Room #304 - Ms. Matthiesen
 1st Grade Room #108 - Ms. Wesley

Youth Exploring Science: One on One with Chris Campbell

By Marcelle Fields at the St. Louis Science Center

The Youth Exploring Science (YES) Program at the St. Louis Science Center is entering our 8th year of service in the community. The program provides job training & professional development for kids in the surrounding area. Teens can begin the 4-year program at age 14.

In providing this service, it is our intention & hope to see these individuals rise above whatever adversity they may face, and graduate to schools of higher learning. One such student, Chris Campbell, is finishing his last year in high school & the YES Program. He has decided to attend the University of Missouri-St. Louis, majoring in Elementary Education with a minor in Psychology.

When asked if he thought that the YES Program prepared him in any way, Chris said that it "definitely did." He pointed out how the ACT tutoring & the Community Science Coordinator, Mei Ling Tung, have been quite a help. Chris appreciated all of the staff through the years he attended. "I'd just like to thank everyone on the staff...everyone has helped me out," he said.

During his time as a YES Teen, Chris Campbell has worked at Tyson Research Center and at the University of Missouri-St. Louis in conjunction with the CISTL (Center of Inquiry in Science Teaching & Learning) program/grant.

Lance Cutter, the program manager for Science Corner, thinks highly of Chris. "Chris combines a sense of humor with professionalism. He is one of those students that can pick up a task quite easily. He's just a pleasant person."

In addition to the YES Program, Chris Campbell participates in wrestling & track Rockwood Summit High School. Chris lives in the Forest Park Southeast neighborhood.

Science Corner

By Nao Ueda & Sabralyn Abernathy

Science Corner, located on the corner of Manchester & Kingshighway, has become an outside learning space for many neighborhood youth. Teens in the YES Program use the corner plot to grow vegetables & do plant science experiments. While they are learning science, the teens also learn mapping & landscaping skills so that they can make the corner look nice for the people who work & live around the plot.

One teen reflected, "when we first started working on Science Corner, the dirt was hard & everything out there was dead. During the seven weeks we worked on Science Corner, our four groups improved everything out there."

One group decided to put some trees out on the corner for shade. They planted a banana tree, a spiral tree, and berry trees. The teens noticed that these types of trees provided a new atmosphere for the Corner. Another group decided to install a birdbath and a bird feeder so that the Corner could have animals on it. A third group wanted the Corner to look beautiful and decided to build a pond. They planted many different colored flowers around the pond, & put stones near it so that people can look into the pond. The pond still has some fish & many water plants. The fourth group put in different flowering plants so that the people waiting for the buses could have a view with many different colors.

The Science Corner teens are looking forward to this summer to work even more on the Corner. They have spent the school year working in the wet lab in the Taylor Community Science Resource Center (TCSRC) learning about plants & other life science topics. This summer, they will be able to put the knowledge they have learned to use on the Corner.

This summer, the Science Corner teens will be joined by another group of YES teens out on the Corner. This new group is called the Yes-2-Tech group, who will explore the importance of green spaces & growing edible plants out on the Corner. We look forward to seeing these two groups of YES teens on the Corner this summer. We hope that they have a lot of fun while they learn & teach science, & help improve the landscape.

Family Care Health Centers

Upcoming Project in Forest Park Southeast Neighborhood

Have you noticed the missing buildings on Manchester just west of Tower Grove? The future home of Family Care Health Centers, FPSE, is located on that empty lot. SM Wilson has been chosen as the construction manager & TRI is the architectural firm. Construction is slated to begin in the summer of 2005 just east of the existing center's parking lot. The new center will expand existing services & add new services, such as dental. We look forward to providing even better services to our patients & we welcome new patients to our center!



Summer Arrived Too Fast!

Now is a great time to start planning summer activities for your children! There are several programs throughout the city that would provide stimulating & enriching activities for young people. There are programs at the YMCA, Science Center, & Saint Louis Public Library. Let's keep our young people busy with safe, educational activities!



Health Point of the Day

Many health authorities recommend that 1: We should be eating five to nine servings of fruits & vegetables daily; 2: We should be eating ocean fish, such as salmon, twice weekly; and 3: Adults should take a multivitamin daily. Is your diet following these recommendations? If not, you need to see your doctor & discuss vitamin supplementation & consider a nutrition referral. Established patients of Family Care Health Centers can make an appointment to see the nutritionist.

Denise Hooks-Anderson, MD
Associate Medical Director

One-on-one with Don Bellon, owner of Bellon's Market & Bellon Wrecking

By Irving Blue

A native of south St. Louis, Don Bellon graduated from CBC High School & then St. Louis University with a degree in Marketing. He works with his family; his son Dan assists with demolition & renovations through Bellon Wrecking, & his daughter Carrie operates Bellon's Market. Currently, he owns these companies as well as several commercial properties. Bellon Wrecking has gained a wonderful reputation for reusing salvaged material in new rehabilitation. The reuse of salvaged material can be seen in all his recent renovations. Don will receive the Spirit Award from Mayor Slay in June.

How did you get started?

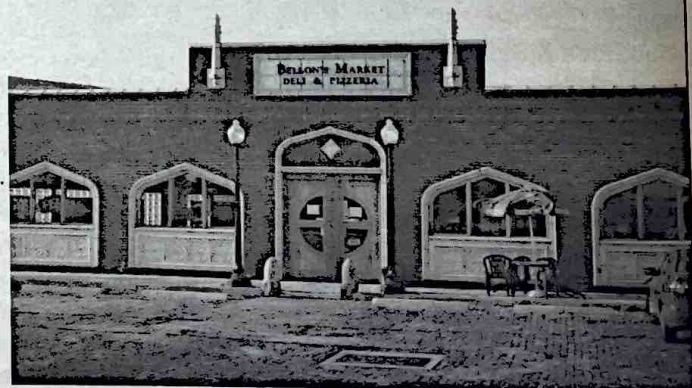
I started off working for my father's grocery store located in north St. Louis, at 19th & Montgomery. That market was in operation from 1931-1973. I purchased my first house next to my dad's place, an old 1890 Victorian house that I paid \$200.00 for in 1973. I later demolished that building, & soon regretted it.

Is this where you got your love for salvaging material?

I never thought about it, but maybe so.

What do you look for in material?

I look for things that are unique & reusable. What the items are valued at are not my deciding factors. I guess I am most noted for the parking lot at Bellon's Market.



SafeHome Initiative: Improving individual & community safety!

Working with residents & businesses, the Forest Park Southeast Development Corporation secured a grant from the Washington University Medical Center to design programs that improve public safety. Currently, two blocks are actively developing strategies to address public & individual safety: 43xx Gibson (Boyle to Tower Grove) & 44xx Gibson (Taylor to Newstead). Each block has designed an individualized strategy to improve public safety. For example, 43xx Gibson proposes to make their block one-way from Tower Grove to Boyle to decrease the intersection at Gibson & Boyle, to improve alley light voltage, to develop a phone tree, to encourage residents to turn-on porch lights, & to request the City enforce curfew. 44xx Gibson proposes improving lighting at Rainbow Park.

The grant stipulates that 51% of the residents must agree to actively participate in developing & implementing a public safety initiative. Signing a petition & developing strategies validates the 51% participation.

The Development Corporation has partnered with Safe Street for this initiative. Safe Street is a City agency charged with working with victims of crime & crime prevention. Safe Street will conduct home assessments per request, advising residents & business of safety strategies as well as installing various security systems: i.e. dead-bolt locks, peep holes, and fire alarms. For more information, please contact the Development Office.

**Don Bellon, continued****What is the idea behind the Demo Man?**

I remember my wife [the late Marry Bellon] gave me a gift similar to the Demo Man, but it was made of pins. I told her then that I would construct a similar image. The steps are an added attraction. By isolating them, they receive more attention.

Why do people steal items off of buildings?

They steal them to get a few bucks. The people who resale the stolen goods make most of the profit.

What is the foundation of your business?

Price & reputation - people know that I will not work for just anyone. I am very selective; I do not submit bids to for all projects.

What is your business goal?

I would like to scale back on the demolition work & become more active in property development. As a developer, there is more appreciation in the work, especially when property is renovated & items are reused. I recently completed three projects: Bellon's Market (904 Vandevender) in July 2003; Novak's Bar & Grill (4123 Manchester) in October 2004; & this summer, Bellon Building 2005 (4127 Manchester). I prefer commercial development over residential.

Don, you are known as a rule breaker - why is that?

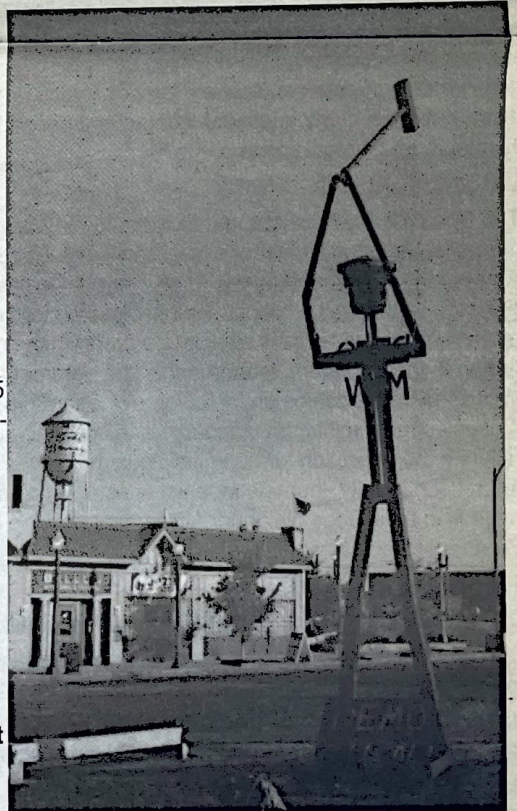
I don't break the rules. I do believe in setting practical time schedules & getting things done. I am aggressive, but I do not sacrifice health or safety & the end results are always positive. I believe you should make a decision & do something. Everyone makes mistakes, but you should learn from them & adjust. I don't like talking without action. Too often, good things get tied up in talk & bureaucracy.

If you could tell the Mayor or Alderman something, what will it be?

I would request that decisions for commercial use be taken from the Alderman. Alderman have to worry about the voter, thus they may not agree with development because of their concern for the residential voter.

Why did you select Forest Park Southeast?

Location (Vandevender & Chouteau). I am in the center of the city, close to everything. Forest Park Southeast has a positive future. Just look - a lot has changed over the past 5 years. I regret that I sold several properties rather than purchasing more. The community is changing.



FPSE Development Corporation FOREST PARK SOUTHEAST

Community Improvement District (CID)

Making the community a better place to live is the responsibility of everyone who works and lives in a neighborhood. For businesses in particular, making the community a better place to work and play involves improving public services. There is a tool that local business owners are trying to put in place to coordinate their efforts for improving and developing the community. This tool is called a Community Improvement District (CID). Missouri state law (MO. Rev. Stat. 67.1401) provides that communities can form these CIDs, providing business & residential communities with an innovative way to fund, implement, & enhance public services and improvements.

Establishing a CID in Forest Park Southeast will provide the owners of property (almost entirely commercial) within the set boundaries with a way to finance the community improvements they would like to see. The proposed boundaries for the CID in Forest Park Southeast are along business and commercial streets, beginning with Manchester from Kingshighway east to Vandeventer; Vandeventer southwest to Tower Grove; and Tower Grove north to Hwy 40; also along Papin between Vandeventer and Tower Grove.



What Exactly is a CID, and How Does it Work?

A Community Improvement District (CID) is an economic development tool that allows property owners and investors within a specific boundary to join together & plan business services or public improvements considered important to the area. These services can range from private security & maintenance to parking, economic development and special events. The property owners and investors share the costs associated with these public improvements through a self-imposed tax or fee. This fee is paid by all of the property holders in the specific district.

CIDs can only be formed by a majority vote among property and business owners in the specific district. Once a CID has been formed, it nominates a Board of Directors to collect the money and determine how spend it. The Board of Directors is made up entirely of property owners within the boundary. A CID is managed entirely by its property owners and investors, and has no control over anything other than the moneys raised. Essentially, a CID helps a community to raise money and to spend it on services that everyone agrees they need without hampering other aspects of anyone's business. If you have any questions about the proposed CID in our neighborhood, please feel free to contact Irving at the Development Corporation at 533-6704.

Liquor Control System

The Board of the Development Corporation is working to implement a Good Neighbor Agreement. The Good Neighbor Agreement is designed for residents to work with area businesses that sell alcohol to help make alcoholic consumption more responsible. This is similar to a program the neighbors began in the Soulard neighborhood. The Agreement does not impose undo hardships on the owners or operators. However, it does suggest minimum standards and accountability, while tailoring the approach for each individual business. Watch future Community Journals for a list of establishments who have filed their Good Neighbor Agreement with the Forest Park Southeast Development Corporation.



Progress on the Merger

Adams Park Community Center & Forest Park Southeast Development Corporation

The Board of Directors for the Forest Park Southeast Development Corporation & Adams Park Community Center voted in favor of the organizational merger at their May meetings. The following mission & goals have been adopted: Mission: to strengthen the Forest Park Southeast Community by working collaboratively with neighborhood & private stakeholders on providing human & social services, quality housing, & promoting commercial development.

Goals:

1. To implement quality housing initiatives & programs that support all income levels;
2. To create marketing strategies that promotes the Forest Park Southeast Community;
3. To facilitate economic growth through business recruitment & retention;
4. To develop & implement human & social services that will foster:
 - Gainful employment
 - Health lifestyles
 - Awareness of educational alternatives
 - Community safety

Adams Park Community Center

Thanks for your support!

The members and staff at Adams Park Community Center (APCC) wish to thank the following for their support of the center, making possible the free and low-cost programming we offer to youth, seniors, families and adults in the neighborhood:

Washington University Medical Center Redevelopment Corporation
17th Ward Alderman Joe Roddy
Areas Resources for Community & Human Services (ARCHS)
Dr. Danforth
Dr. Jerome Flance
The General Mills Foundation
Forest Park Southeast Development Corporation
St. Louis Science Center
St. Louis Area Agency on Aging
St. Louis Cardinals
Residents and Members

The General Mills Foundation is pleased to make a grant in the amount of \$10,000 to APCC for the Healthy Futures program, which is a diabetes prevention curriculum that inspires children to maintain eating habits & physical activity conducive to healthy lifestyle. Healthy Futures is recognized by the Center for Disease Control as a model program for nutrition & physical fitness education. Over 1,000 organizations applied for a Champions grant & APCC was one of the 50 selected. The project is scheduled to start in the fall.

At APCC, we work together with all of our partners to provide programs that meet the needs of the entire Forest Park Southeast Community. Current programming includes:

Math Plus: Teaming up with the St. Louis Science Center, we have begun this exciting after school program. Math Plus helps students to find the math in everyday experiences & creates awareness about the importance of math skills for future career options.

Science First Hand: Beginning in June, this five-week project will match 25 adults with children to explore science and discovery. We are currently looking for adult participants who like to discover & have fun! If you are interested in volunteering, please contact Ida Roundtree @ (314) 633-7900.

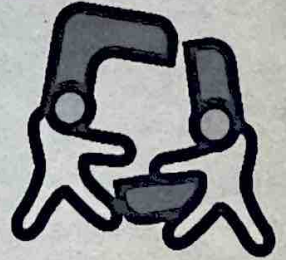
Head to Toe: This nutrition and exercise program is sponsored by St. Louis Children's Hospital and teaches health and safety to moderately overweight children between the ages of 8 and 12. Head to Toe encourages weight management by teaching children how to live healthier lives through eating right & exercising regularly. Participants learn portion control, food choice & how to easily increase activity. Parents also have the opportunity to meet as a group. The fee is only \$50 for a 10 week session, but a doctor's referral is required for acceptance. Register by calling 454-KIDS.

MERS/Goodwill: provides work readiness & job development skills to all residents interested in permanent employment. This agency has been with APCC since October & has already enrolled 64 Forest Park Southeast residents in the job readiness training program. To date, thirty-three have graduated from the 3-week job training & are working with the employment specialist to obtain employment. Twenty out of 64 have become gainfully employed.

Seniors Program: Over sixty seniors receive a hot meal delivered to their home every day. Fun activities include arts & crafts and bingo. Fitness programming includes Yoga & dancing classes. The senior program is an excellent way for seniors of the community to mingle & enjoy interesting and challenging activities.

Positive Alternatives: This Public Safety Initiative brings together the residents, 9th District Police Officers, Operation Safe Street, and the Development Corporation to decrease gang & drug activity in the neighborhood. The program also provides residents with resources for making their homes & streets safer through the Community Safety Initiative. For information you can contact Kabir Muhammad (581-4575) or Forest Park Southeast Problem Properties Officer Mike Opfer (633-7909).

After-School Programming: Along with the programs already mentioned, we partner with St. Louis City Department of Recreation, Adams Elementary School and volunteers to offer tutoring, recreational & cultural programs like art, dance & music classes. The Adams Park Community Center requires on-going, hands-on participation. You - the community - are who brings life to the hub of the community. We love to see you using the center, attending our special events, volunteering, donating and spreading the word about the good things happening at Adams Park Community Center!



ADAMS PARK
COMMUNITY CENTER



Merger, continued

5. To create a balanced budget of grants, service fees, & development fees that supports the mission & goals; and
6. To provide an environment for employees that is conducive to:
 - Continuous learning
 - Productivity
 - Personal & professional growth

Your continuous involvement is key not only to the success of the merger, but to the success of all programs and activities we will implement in the future. We run these programs for you, and we look forward to working with you! Page 7

Calendar

- June 13 Last Day of school at Adams Elementary School
- June 20 First Day of Summer School at Adams
- June 25 Community Softball Game at APCC
Contact Sue Lauritsen for more info
- July 19 Gibson Heights meeting
Gibson Heights Presbyterian Church at 7:00pm
- August 2 National Neighborhood Night Out
- Sep. 17 FPSE Home Showcase
- Oct. 1-2 Garage & Alley Sale
Contact Irving Blue for more info



Monthly meetings:

- Development Corporation Board of Directors - 1st Monday
 - New Boyle Improvement Assoc. - 2nd Tuesday
 - Business Association - 2nd Wednesday
 - Adams Grove Neighborhood Association - 2nd Thursday
 - Adams Park Community Center - 2nd Thursday
 - Adams School Parent-Teacher meeting - 3rd Thursday
 - Ranken East Health Committee - 4th Monday
 - Forest Park Southeast Community Council - 4th Tuesday
- Please feel free to contact the FPSE Development Corporation's office for details on all meetings and events.

Survey: Questions to Think About

A group of neighbors have brainstormed and created the following list of questions. Think about them, talk to your family and friends and be ready to try to come up with answers. You never know when someone will ask for your opinion! Hopefully the answers to these questions from our neighbors will help us all to improve on our problem areas and to strengthen our assets.

1. Where do you shop? Why?
2. How do you describe your block & FPSE to persons outside of the neighborhood?
3. If you could change one thing in FPSE, what would you change? Why?
4. How many of your neighbors do you know by first name?
5. Envision Forest Park Southeast in 2015. What would you like to see?
6. Our neighborhood has both businesses & residential housing. How can we improve the communication between the two?
7. Name five (5) things that have changed over the past year where you wish to personally invest your time, money, & creative resources on improving or protecting.
8. Compare our community to others. How is it different?
9. How involved are you in community change? Why or why not?
10. What makes a community strong?



Remember, you are a part of the solution!

Contributors:

- Adams Elementary School
Principal Sharonica Hardin, Sharonica.Hardin@SLPS.org 533-3910
- Adams Park Community Center
Director Ida Roundtree, IRoundtree@aol.com 633-7900
- Family Care Health Center
Medical Director Dr. Denise Hooks-Anderson, DrHooks@swbell.net 531-5444
- Forest Park Southeast Development Corporation
Executive Director Irving Blue, IBlue@FPSEDC.org 533-6704
- St. Louis Science Center
Community Science Assistant Marcelle Fields, Marcelle_Fields_Esq./SLSC@slsc.org 289.1497
- Newsletter Editor Lynne Wymore Moo, Lynne@SimpleSolutionsConsulting.org



Many thanks to everyone who contributed to this Community Journal!
Publication has been generously underwritten by
Washington University Medical Center &
St. Louis City Community Development Administration.