

Community Journal

A publication for Forest Park Southeast and surrounding neighborhoods

Issue Number 5

Spring 2006



Neighborhood Bike Club

In an effort to improve health, build friendships among bikers, and support Bike St. Louis, the Forest Park Southeast Development Corporation is sponsoring a Bike Club. We invite bikers of all ages and levels to participate. Our first meeting will be Wednesday, April 12th at Adams Park Community Center from 6 – 7 pm. At this meeting, we will develop what the Bike Club will do and how it will function.

Bike St. Louis began in the Spring of 2002 with Alderman Lewis Reed. Alderman Reed argued that bike paths throughout the city would help make St. Louis a nicer place to live. A bike route could also offer an easy way to reach and enjoy our many city parks, our unique local history, and plenty of shopping.

Alderman Reed argued that the new program would attract new neighbors, increase property values and tourism, and promote local business. He discussed his ideas with other Alderpersons and found that many of them shared his vision. In addition, Alderman Reed found a partner in the Great Rivers Greenway District (GRGD).

Coupling the Alderman's vision with the extensive knowledge and

experience of GRGD would help ensure the project's success.

A committee comprised of bikers, residents, and city officials met to begin identifying the routes for Phase I of Bike St. Louis. In addition, GRGD contracted with Kiku Obata to design signs for the bike route and a map identifying the route, neighborhoods and businesses. The signs are already up around town, and the maps are available at bike shops and visitor centers.

As Forest Park Southeast begins our own bike club, this spring will be a great time to pump air into your tires and go for a bike ride! Join your neighbors and take advantage of the great resources provided by Bike St. Louis. For more information, come to the meeting on April 12th or contact the Development Corporation.

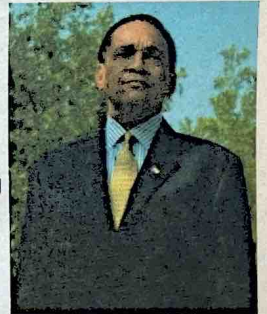
New Forest Park President Walking Tall

By Pat Metrici, St. Louis Community Colleges

The perfect welcoming gift for Morris F. Johnson III would be a new pair of walking shoes. Johnson came to St. Louis last July as the new president of St. Louis Community Colleges at Forest Park.

Since then, he's spent considerable time strolling the hallways, introducing himself to students, faculty and staff—and listening and observing. He calls it "management by walking around," a strategy that has worked well in his past positions at two major community colleges in Arizona and Iowa.

"I'm here to provide leadership stability and to work with the faculty, staff and students," he said. "None of us is smarter than all of us, so collectively, we will move forward. Their input, guidance and expertise will play a critical role to our being successful." (continued on page 5)



Operation Brightside Blitz 2006

This Saturday, March 18, join your friends and neighbors for Operation Brightside's Project Blitz as we clean alleys, streets, sidewalks, and parks. Forest Park Southeast neighbors will clean alleys and streets near your homes, meeting at the Development Corporation for breakfast at 8 am. McRee, Tiffany and Shaw neighbors will meet at the corner of Blaine and Klemm for breakfast at 8 am, and to clean up the 8200 block of Blaine. All are invited to the parking lot next to Ujamaa Maktaba bookstore at Tower Grove and Mancheseter for a BBQ lunch at noon.

Grab your shovel and work gloves, bring your neighbors and plan to work! Please contact the Development Corporation for more details or suggestions on work projects you can participate in.

Forest Park Southeast Summit

Hear first hand about all of the changes taking place in our community! Learn about the scheduled and proposed activities of developers, the Business Association of Forest Park Southeast, the Development Corporation, and other community-wide initiatives. The Summit will be similar to a Town Hall Meeting, but don't mistake it for Alderman Joe Roddy's annual 17th Ward Town Hall Meeting. This is simply an opportunity for the community to learn, and make suggestions for various projects and community improvements. Attendees will also be asked to volunteer for committees.

Bring a neighbor, and become involved in the changes in our community. The Summit is scheduled for Saturday, May 6th from 10:00 – noon at Adams Park Community Center.

The New I-64 Project

Community Journal, Number 5, Spring 2006

The New I-64 will reconstruct 12 miles of Highway 40 / Interstate 64 between Spoede Rd. and Sarah St., and from Brentwood Blvd. to Eager Rd. on I-170.

Will I-64 be closed for construction?

MoDOT will not close the entire roadway for the duration of the 4 year project, but closures can be expected on ramps, lanes, interchanges and the roadway for short periods of time.

Once construction starts in early 2007, there will be daily, weekly, and long-term updates on the schedule for construction, what will be open and closed, and what options people have to get around. The whole project will be complete no later than October 2010.

What construction is scheduled first?

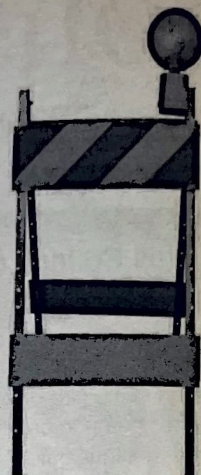
MoDOT plans to have the entire project under construction at once. This means work could take place anywhere or everywhere over the entire length of the project. It's fair to say the interchanges and overpasses will be built before the roadway. Construction will start in early 2007 and finish by October 2010.

Why isn't MoDOT adding lanes east of I-170?

Redesigning the roadway and adding exit only lanes between interchanges will improve traffic. There will be more pavement, just not necessarily all new continuous lanes for 12 miles. Adding lanes is not the only way to improve the flow of traffic.

West of I-170, I-64 carries 170,000 vehicles each day. Our side of I-170 only carries 140,000 vehicles each day. Traffic backs up east of I-170 mainly because of old design, steep hills and short on- and off-ramps. We will improve traffic flow by addressing these problems to better use the traffic lanes that we have.

(Continued on page 10)



Grand Opening

Unique Urban Apartment Homes

LOfts
AT THE
HIGHLANDS



- Heated, underground parking
- 2-story fitness center
- Panoramic views in a park-like setting
- Stainless steel appliances
- Ceramic tile
- Washer & dryer in every unit
- Roof terrace with jacuzzi
- Pets welcome
- First month free rent



**BALKE
BROWN**
ASSOCIATES

1031 Highlands Plaza Dr. West • St. Louis, MO 63110
(314) 621-1414 • www.highlandslfts.com

If you have any complaints or concerns relating to safety and security please contact:
Community Safety Coordinator Kabir Muhammad
314-633-7903 office
314-581-4575 cell
e-mail: alternatives4youth@yahoo.com
or Forest Park Southeast Liaison Officer Mike Opfer
314-633-7909

The Community Journal - A Publication for Forest Park Southeast and surrounding neighborhoods

Sponsors: Washington University Medical Center
Redevelopment Corporation,
St. Louis Community Development Association,
Forest Park Southeast Development Corporation
Editor: Lynne Wymore Moo, Simple Solutions Consulting
Printer: Arcade Printing

Advertising is now available! Please contact Jackie at the Forest Park Southeast Development Corporation for rates and submittal requirements. Reach Jackie at 533-6704 or jroberson@fpsedc.org.

The Community Journal is published quarterly. The next issue will be published in June. We welcome your submissions as articles, calendar events or letters to the editor. Email your submissions to Lynne@SimpleSolutionsConsulting.org or call Lynne at 578-1794. Open submittal deadline is May 1st.

The writer is responsible for the accuracy of any data, including times, dates, locations and particularly the spelling of names. The editor retains the right to omit or alter any material.

Need Medical Care?

Call For An Appointment - New Patients Welcome
(314) 531-5444

Most insurance plans accepted.

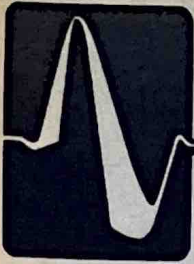
Patients without insurance are served on a sliding fee based upon income and family size.

Family Care Health Centers
Your Health Care Partner For Life

Services:

OB/GYN, Pediatrics, Internal Medicine, Nutrition, WIC, Family Planning, Optometry, Counseling, HIV Counseling & Testing, Pharmacy, Dental, Community Health Nurses, and Free Pregnancy Testing

4352 Manchester Avenue
www.familycarehealthcenter.org
(314) 531-5444



St. Louis College of Health Careers

St. Louis College of Health Careers

The demand for qualified healthcare professionals continues to increase and St. Louis College of Health Careers will be a driving force in the education of those individuals who rise to the challenge as healthcare professionals. At St. Louis College of Health Careers, we design our academic programs to give students a well-balanced education in the classroom, while providing exceptional clinical experience in the St. Louis healthcare community. Graduates go on to practice in a variety of facilities, including the many hospitals in St. Louis and the outlying counties, doctors' offices, clinics, and nursing facilities.

Degrees are offered in the following specialties:

Medical Assistant Practitioner

AOS Massage Therapy

AOS Ophthalmic Medical Assisting

AOS Diploma Programs can offer an exciting career in a shorter time-frame:

Medical Assisting, Medical Billing and Coding

Massage Therapy – Diploma

Practical Nursing – LPN

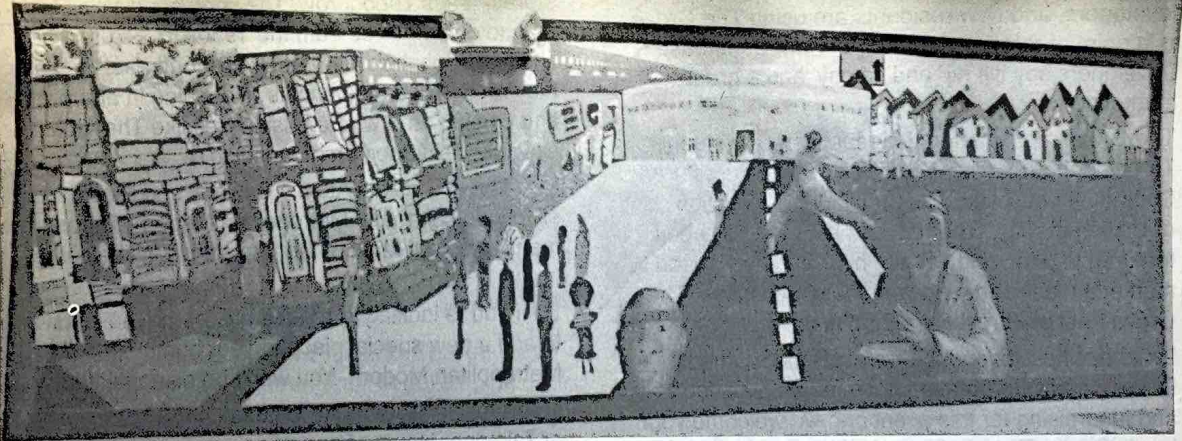
Pharmacy Technician

Patient Care Technician



St. Louis College of Health Careers is located in Forest Park Southeast at 909 S. Taylor and Forest Park Southeast Good Neighbor Scholarships are available to neighborhood residents.

Visit us at www.slchc.com or call 562-0300 for more information.



Where is the Math?

"Afterschool Math Plus" at Adams Park Community Center

By Jenny Martin and Siinya Riley at St. Louis Science Center's Community Science Department

The Saint Louis Science Center's Community Science Department is currently working with students from Adams Elementary School and Community Center on a project called Afterschool Math Plus (ASM+). The purpose of this project is to provide elementary school students with the opportunity to learn math skills through various themes. The current theme is "Art Math." Students explore math concepts by studying different artists and their styles, such as M.C. Escher and Piet Mondrian.

Teenagers from the Science Center's Youth Exploring Science (YES) Program facilitate the Art Math activities at tables with the students. The YES teens are trained on the curriculum prior to teaching the students at Adams Park Community Center, which allows them to practice their teaching skills and gain an understanding of the math. Both the teenagers and elementary students have learned many mathematical concepts, including symmetry, patterns, tessellations, and geometric shapes. The students also create their own art math, to be exhibited at the Science Center during Community Science Day on May 13th.

The next theme for Afterschool Math Plus will be "Music Math." This curriculum will focus on math in music. Adams students will learn how to read music through math, and will eventually compose their own songs. Page 3

There's a bit of Cowboy in all of us...

By Chip Schloss

...and in you. You will discover Atomic Cowboy is more than a Bar, and way more than a Restaurant. Definitely a city outpost, the atmosphere exudes urban character - it's turn of the century gone atomic. Atomic Cowboy offers a different kind of feel then most nightclubs. The focus is more on bringing people together; a place where everybody's welcome. The vibe you get is energetic but comfortable. The kitchen jumps and grooves. The Baja Grille sizzles and you smell the spice. The bar has old school bones yet worldly sophistication. Amber lighting gives the place - and you - a beautiful glow. Art, Music, & Entertainment are vital elements of this urban outpost. No audio wallpaper here... the Cowboy goes to great lengths to make sure the music is just right. Come and enjoy the evolving atomic entertainment landscape. You will feel instantly at home at Atomic Cowboy... "Giddyap" !!!



Atomic Cowboy
4140 Manchester Avenue
Saint Louis, Missouri 63110
314.775.0775
www.Atomic-Cowboy.com

What's in a Name?

By Irving Blue

Forest Park Southeast vs. The Grove – have you heard? The hottest new name in the city of St. Louis is "The Grove". This name comes from Adams Grove, the part of FPSE south of Manchester. Visitors, developers, and new residents are using The Grove as a point of reference for Forest Park Southeast. Developers say it's hip and catchy, and a great marketing tool.

The Grove mainly refers to Manchester Avenue. The neighborhood is still officially called Forest Park Southeast, much like The Loop is only a section of University City. The name The Grove has been featured in print, and you will hear and see it used to market a music, art, and vending event called "The Grove Fest at Forest Park Southeast."

Local businesses and the Forest Park Southeast Development Corporation have begun planning and fundraising for this event and we welcome your involvement. The chairmen for this event are Chip Schloss at The Atomic Cowboy and John Boldt with Boldt Brothers Companies. If you are interested in participating or learning more, please contact Irving (iblue@fpsedc.org) or Jackie (jroberson@fpsedc.org) with the Development Corporation at 533-6704.



Metropolitan Modern

By Jessica Castiglioni

Metropolitan Modern is your local connection to mid-century and postmodern home furniture and décor. Inside you can find high-end merchandise at reasonable prices.

Gus Theodorow and his partner opened the shop at 4130 Manchester last April. "You can furnish your whole house here, for less than most larger furnishing stores," says Theodorow. The shop specializes in unique commodities from the 1930s to 1970s. They chose the location in Forest Park Southeast because they recognized the benefits to opening in an up and coming area where businesses like The Atomic Cowboy, next door, are flourishing.

In fact, if you visited Atomic Cowboy and liked the style, you can thank Metropolitan Modern. Theodorow mentioned that most of the furnishings inside came from his store.

So if you're looking to redecorate, or maybe just want to add a new special piece to your home, stop by Metropolitan Modern. You won't be disappointed.

Metropolitan Modern is located at 4130 Manchester, at Talmage. Hours of operation are Tuesday through Friday 11-6:30 and Saturday 11-5 or by appointment.



The Grove Fest at Forest Park Southeast

By Chip Schloss

June 17th marks the date of the 1st Annual Grove Fest... a celebration of living, working & playing in the Forest Park Southeast neighborhood. The festival will be held in the streets between Sarah & Boyle and will include a variety of food, art, music, and other attractions from noon to midnight.

Education Is the Key Scholarship

Heads up, Forest Park Southeast neighbors! The Development Corporation is sponsoring a scholarship to help you afford St. Louis Community Colleges at Forest Park! They're offering this money to any FPSE neighbor who is now or will be taking classes at the Forest Park campus of St. Louis Community Colleges.

To qualify, students must:

- live in the Forest Park Southeast Development Corporation's area (between I-64/40, I-44, Vandeventer and Hampton);
- be willing to complete 10 hours of community service per semester through the Development Corporation;
- be either currently enrolled or newly enrolled in for-credit classes at the Forest Park campus;
- have a 2.8 cumulative GPA if currently enrolled at Forest Park; and
- complete an application and write a brief essay titled "Why I Deserve a Scholarship."

Two students will receive scholarships this spring. One award of \$2,000 will go to a full-time student, and one award of \$1,000 will go to a part-time student. These scholarships may be used for tuition as well as books or supplies. Students studying any subject are encouraged to apply. Full-time students studying art are especially encouraged, for they will be given priority. This scholarship is for students of any race, creed or national origin.

Interested? Call the Development Corporation at 533-6704 and ask about the Education is the Key Scholarship. But act soon! This money will be awarded this spring!

Do you vote?

Our community's next election will be on April 4th for 2 members of the Board of the St. Louis Public Schools.

City Officials

Mayor Francis Slay 622-3201
Comptroller Darlene Green 622-4389
President of the Board of Alderman Jim Shrewsbury 622-3287
17th Ward Alderman Joe Roddy 622-3287

State Officials

Governor Matt Blunt (573) 751-3222
Lieutenant Governor Peter Kinder (573) 751-4727
Secretary of State Robin Carnahan (573) 751-4936
State Auditor Claire McCaskill (573) 751-4213
State Treasurer Sarah Steelman (573) 751-4123
Attorney General Jay Nixon (573) 751-3321
64th District State Representative Rachel Storch (573) 751-1400
5th District State Senator Maida Coleman (573) 751-2606
4th District State Senator Pat Dougherty (573) 751-3599

National Officials, St. Louis offices

US Senator Kit Bond 725-4484
US Senator Jim Talent 432-5211
1st District US Representative Lacy Clay 367-1970
3rd District US Representative Russ Carnahan 962-1523



Alderman Joe Roddy with volunteers on Make a Difference Day.

Forest Park President, cont.

During nineteen-plus years at Phoenix College in Arizona, Johnson was instrumental in developing a reading program, which brought area first- to third-graders on campus. "I made sure to bridge those connections at area schools," Johnson said. "A key to these programs was getting the parents involved. After seeing what we had to offer their children, the parents were then more easily recruited to take classes as well. So it was a win-win situation."

He plans a similar approach in St. Louis, and looks forward to working with the new superintendent of the St. Louis Public Schools, Dr. Creg Williams.

"We're both coming in new, and I'm sure we will look at what needs exist and how we can better prepare students to enter college and get them exposed to college even in junior high school," Johnson said.

"I like challenges," Johnson said. "I consider myself to be a change agent, and I have a high energy level. I was lucky enough to better myself through education, and hopefully I can give back to the community."

Garage and Alley Sale

The first annual Forest Park Southeast garage and alley sale is coming up on Saturday and Sunday, May 13th and 14th. Got junk or treasures? Load up your card table and strike it rich!

Your job? Select which treasures you want to part with and make money selling them! Each person will be responsible for setting up their own sale, providing items, and cleaning up their area before and after the event.

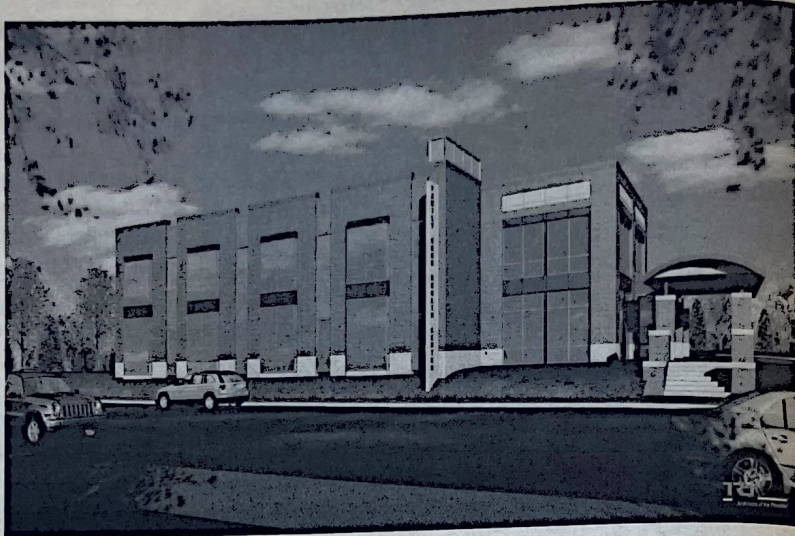
The garage and alley sale will go from 8:00 in the morning until 2:00 in the afternoon. The Development Corporation will prepare newspaper articles and flyers for the community-wide event. Look for word of the sale in the Southside Journal, the West End Word, and the Vital Voice. In addition, please come by the Development Corporation office at 4471 Arco and pick up a flyer for your office, church, or anywhere you visit. See you at the sale!

Forest Park Southeast Residents

Get New Health Center

By Karen Berryman Harvey

Family Care Health Centers is building a new 16,800 square foot, story-and-a-half health center to replace the existing facility at 4352 Manchester Avenue. The new center will expand existing medical services, add dental and pharmacy services, have 21 medical exam rooms and six dental operatories. Medical and dental services will have separate waiting rooms. The new pharmacy will provide certain prescription drugs at affordable and reduced rates. Expect completion in the summer of 2006.



Several elected officials attended the August 25 groundbreaking ceremony where the schematic design and floor plans were unveiled for the new Forest Park Southeast health center.

"Community-based health care has always been one of my top priorities in Congress. The federally qualified health centers are a critical link in our health care system, because they provide quality care to patients who are most at risk, and who have little access to other health care facilities. I want to congratulate Family Care Health Centers on this important new project and I pledge my continued support in Washington to improve community health care," said U.S. Congressman William Lacy Clay.

"Now more than ever—with increasing attacks on health services for our poor and middle class—Family Care Health Centers will be a refuge in the current storm for so many who need quality health care. They are a true safety net," said State Senator Patrick Dougherty, District 4.

"I am proud to support this vital asset in our community," Senator Maida Coleman said. "With the drastic cuts to health care we have seen in the past year, Federally Qualified Health Centers (FQHCs) like Family Care Health Centers are more important than ever. For many uninsured Missourians, they are the only places that will provide medical help, so they deserve every ounce of support we can give them."

"Building a new Family Care Health Center is a tremendously exciting event for our community," said State Representative Rachel Storch. "For years, the health center has provided high-quality, accessible care to St.

Louis residents. The new facility will further enhance the ability of medical staff to deliver positive health outcomes," Storch said.

During the past 36 years, Family Care Health Centers has grown to provide a holistic array of comprehensive services which include adult medicine, pediatrics, OB/GYN, family planning, WIC, optometry, HIV counseling & testing, nutrition, pharmacy, dental services and inpatient hospital care.

To learn more about Family Care Health Centers, please call 531-5444 or visit our web site at www.familycarehealthcenter.org.



Dignitaries dig in during the ceremonial groundbreaking for a new Forest Park Southeast health center. From left are state Senators Maida Coleman and Patrick Dougherty of St. Louis; Susanne Hoffmann, FCHC board president; Dr. Robert Massie, FCHC chief executive officer; U.S. Representative William Lacy Clay of St. Louis; Charles Bryson, aide to Mayor Francis Slay; Father Gerry Kleba, pastor of St. Cronan Church; and state Representative Rachel Storch of St. Louis.



since 1953

Renard Paper Company, Inc.
 4465 manchester avenue . st. louis, MO 63110
WE SELL & REPAIR VACUUMS
 ALL MAKES & MODELS... RESIDENTIAL & COMMERCIAL
314.371.4422
 mention this ad for \$5 off your first order!!!

Tarlton Corporation proudly supports
The Community Journal.



TARLTON
General Contractors & Construction Services

5500 West Park Avenue • St. Louis, Missouri 63110
 314-633-3300 • www.tarltoncorp.com

for sale

Homeownership Opportunities Available in Forest Park Southeast

A community for you to live, work and play!

4220 Vista - \$13,500, 2 bedrooms, 1 bath, 1110 sq ft

Single family property. Ranch type with a traditional style. Call ReMax Midwest Group @ 542-9440.

4226 Vista, \$17,500, 1 bedroom, 1 bath, 704 sq ft

Single family home. Property to be sold as-is. Call Vincent Lindwedel @ 968-8228.

4426 Vista, \$39,900, 4 Units, 3400 sq ft

This 98 year old building has forced air. Call Hampton Park Properties @ 353-7355.

4402 Vista, \$49,000, 2 Units, 1408 sq ft

This 2-family is for the serious rehabber or investor. Framing is done; ready for new systems. Call 367-8755.

4330 Gibson, \$62,500, 4 bedrooms, 2 baths, 2524 sq ft

Spectacular opportunity for handyman investor. Call Hilbert Nation Realty @ 481-7653.

4534 Manchester, \$64,900, 2 bedrooms, 2 baths, 940 sq ft

Property completely remodeled & rehabbed in 2004-2005. Huge family room & bath on lower level. Private patio on east side of home. Security system & warranty. Selling As Is. Call Terry Kratky @ 645-4332.

4400 Vista, \$68,000, 4 units, 3771 sq ft

This multi-family is for the serious rehabber or serious investor. It has been gutted and stripped. The unique layout offers several different uses for this building. It could be a single, a duplex, a three or possibly a four. See www.realtor.com/Prop/1055195976.

4443 Swan, \$90,000, 2 Units, 3498 sq ft

Call First Class Realty @ 447-0557.

4546 Arco, \$99,900, 3 beds, 2.5 baths, 2250 sq ft

Property is ready to be rehabbed. Gutted and cleaned out. Seller will provide approved plans. Call Catie Youman-Mooney @ 280.0677.

4444 Gibson, \$112,900, 1 bed, 1 bath, 742 sq ft

Superbly renovated from the ground up with beautiful plantings in front, side and back yards. French doors from the sunroom lead to a comfortable deck overlooking your domain. Call Jeanne Cavanaugh 921-9900.

4240 Norfolk, \$135,900, 4 units, 3200 sq ft

Call Trident Inc. @ 636-940-4020.

4540 Oakland, \$140,000, 2 units, 2652 sq ft

Call Remax @ 781-7777.

4537 Swan, \$149,900, 4 units, 3560 sq ft

Call Eichelberger Realtors @ 752-3140.

4516 Chouteau, \$182,500, 2 bedrooms, 2.5 baths, 1600 sq ft

A lovely town home. Call Kenneth Jackson @ 367-8755.

4460 Gibson, \$199,500, 3 bedrooms, 1.5 baths, 1950 sq ft

Priced to sell. Call Daniel McGuire @ 636-391-1122.

4415 Gibson, \$210,399, 3 bedrooms, 2 baths, 1900 sq ft

Completely renovated home situated on a fully fenced double lot. Call Mary One Johnson @ 436-3970.



If you're interested in one of these houses, do not rely on this information. Real estate changes quickly. We recommend you call the number listed above for information. To learn more about the Forest Park Southeast neighborhood, call Barbara in the Development Corporation at 533-6704 or visit our website at www.fpsedc.org.



Forest Park Southeast House Tour

Forest Park Southeast's next house tour is scheduled for Saturday, September 23rd. Last year's event was fantastic, and this year we plan to improve upon our success. We need your help! Volunteers are needed on the planning committee and on the day of the event. To get involved, contact Barbara at 533-6704 or bjames@fpsedc.org.

Last year, we partnered with the Loft at the Highlands and the Botanical Gardens. Entertainment included the Haywood Brownlee Jazz Band, an alumni art show from SLCC at Forest Park's Art Department and the Taste of FPSE with food from Bellon's, La Dolce Via, and the Atomic Cowboy. An estimated 300 visitors came to the neighborhood last year.

Special thanks to C.R. Homes, Commerce Bank, Beyond Housing/NHS, Prudential, Sherwin Williams, Soldi Financial, St. Louis Science Center and Pepsi-Cola USA.

The Highlands

Balke Brown Associates is putting the finishing touches on the new 126 room Hampton Inn & Suites and Krieger's Family Sports Pub located on Oakland Avenue at the Highlands at Forest Park development. Balke Brown Associates owns both the hotel and restaurant which are scheduled to open in early May. Balke Brown Associates also recently completed construction on the beautifully designed and constructed Lofts at the Highlands. The Lofts feature 200 luxury market rate apartments in two five-story brick and glass buildings. Features include free in-building covered parking, a fitness center and rooftop Jacuzzis in each building; and granite countertops, stainless steel appliances and 10 foot ceilings in each unit. The project was completed in October 2005 and is leasing up well.

Please contact Balke Brown Associates at 647-7100 for any information on the Hampton Inn & Suites, Krieger's Sports Pub or the Lofts at the Highlands.



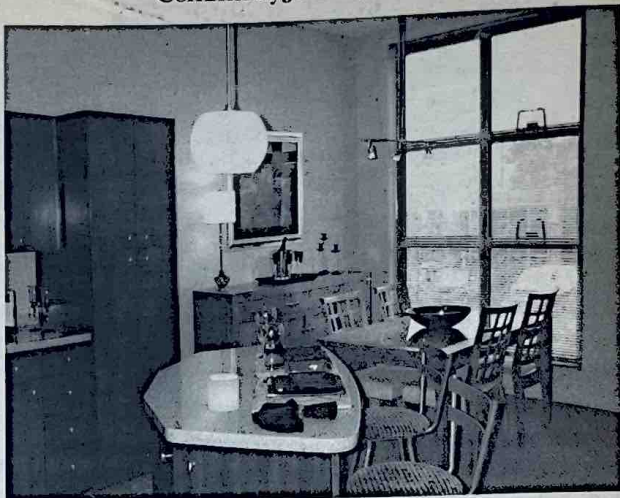
The new Hampton Inn at The Highlands.

Landlord Association

By Esther Lepcha

On February 8th, the Forest Park Southeast Development Corporation hosted the first Landlord Association meeting at Adams Park Community Center. The Development Corporation invited area property owners to gather and discuss issues pertaining to property leasing and management. The Development Corporation decided to create a Landlord Association in order to assist area landlords as they take good care of their properties and units, helping to create a more stable community for everyone.

In the meeting, Irving Blue, Executive Director of the Development Corporation, said "We want to initiate this association because it helps the property owners maximize cash flow which in turn will help property owners to invest into their properties." He also emphasized that as members of an association, they could share marketing and other costs and discuss ways to improve services. We hope that the Landlord Association will motivate property owners to maintain and improve their residences and units and help create a safer environment for the entire community. The Development Corporation will host the second meeting on April 12th from 6-7p.m. at Adams Park Community Center. If you are a property owner, please contact the Development Corporation at 533-6704 or ibblue@fpsedc.org for more information.



For Rent

The following properties are available for rent in the Forest Park Southeast neighborhood. Contact the Development Corporation for more information.

Luxury 2 bedroom Condominiums

- 4366 Forest Park Pkwy., 1A
- 4366 Forest Park Pkwy., 1B
- 4366 Forest Park Pkwy., 2C
- 4366 Forest Park Pkwy., 3F

Each unit includes a washer/dryer hook-up, extra storage, off street parking, a front balcony, central air and heat, and much more.

Historic one bedroom units

- 4413 Hunt
- 1092 S. Taylor

Two bedroom apartment

- 4221 Vista

This apartment includes new appliances, new carpeting, central air and heat, and more.

Coming soon

- 4500 Chouteau

This is commercial property at a great location.

Call Ralph Martinez at the Development Corporation at 533-6704 to jump on one of these great apartments in Forest Park Southeast!

Washington University Medical Center Beefs Up Service Programs in FPSE

With the recent addition of Community Development Specialist Brooks Goedeker, Washington University Medical Center (WUMC) has been able to expand its social service efforts in the FPSE neighborhood. "We are hoping to not only fund unique initiatives, but also partner with organizations and agencies that have an established track record of working successfully in communities," stated Goedeker. Along with strong collaborations with social service agencies, WUMC is hoping to increase the community outreach of Washington University and BJC HealthCare.

This April, Rebuilding Together, an organization dedicated to rehabilitating the houses of low-income homeowners, particularly the elderly and the disabled, (continued on page 9)

Washington U. Medical Center, cont.

...so that they may continue to live independently in comfort and safety, is partnering with WUMC to work on seven homes on Gibson. WUMC helped the homeowners complete their applications and worked with Rebuilding Together to attain the money for this program to take place.

Along with rehab assistance, WUMC has continued to concentrate its efforts on safety and security. Kabir Muhammad, the safety coordinator for FPSE, holds monthly resident forums on safety & security. He also coordinates with the police, and successfully worked with Operation Brightside to remove over 100 markings of graffiti from buildings in 2005.

An additional safety and security component that WUMC has introduced to the FPSE neighborhood is the SafeHome Initiative. The initiative offers free safety and security enhancements to blocks in FPSE. To participate in the program, at least 51% of households on a block must register for a free home safety analysis. They are then eligible for safety enhancements including locks, window keepers, peep holes, smoke and carbon detectors, exterior lighting, and fencing.

This year marked the 9th consecutive year for the WUMC Holiday Outreach Program. Departments at Washington University's School of Medicine adopt FPSE families in need. This year WUMC presented over 20 families with holiday gifts, food, and utility assistance.

In addition to the initiatives already mentioned, this year WUMC is committed to funding the MERS/Goodwill Employment Program, the Forest Park Southeast Seniors Program, the SCORES after-school program at Adams Elementary, and the Community Journal. Goedeker concluded, "We are not here to duplicate services; rather we want to concentrate our efforts on filling the gaps, so that Forest Park Southeast continues to be a viable community headed in the right direction."

MERS/Goodwill Employment Program Makes Strides in FPSE

New Services Available in 2006

Last year, MERS/Goodwill employment services in Forest Park Southeast, sponsored by Washington University Medical Center (WUMC), was able to successfully recruit 75 residents and place 32 into employment. Seven of those participants got jobs nearby at BJC HealthCare or Washington University School of Medicine.

This year, MERS/Goodwill and WUMC are proud to announce an additional arena of services available to the residents in the FPSE community. We are excited to offer stipends to FPSE residents attending GED classes with perfect attendance and an even bigger reward for those who complete and obtain their GED.

In addition, FPSE residents will be able to receive free training in the following areas:

- entry level accounting;
- office computer and administrative skills;
- data entry;
- building maintenance;
- culinary arts; and
- PC Technician A+/N+ training.

If that's not enough, we have also partnered with Justine Petersen Housing and Reinvestment Corporation to offer free financial counseling, free check cashing assistance, and Individual Development Accounts to help pay for a house, education, a car, home repair, or a small business.

We welcome all Forest Park Southeast Residents! We are located in the Adams Park Community Center at 4317 Vista in Suite 158. Please contact Rayfinette Sanford at 633-7916 to schedule your appointment today.

A Novak Burger
Eat in or carryout
7 days a week...

Open @ 4
NovaksBar.com
4121 Manchester
531-3699

C. Hundley and Company

Cynthia D. Hundley
Certified Public Accountant

618-635-2487
cdehundley@yahoo.com

Boldt Brothers
Building Maintenance
is proud to support
The Community Journal

Boldt
BROTHERS
BUILDING MAINTENANCE

Successful Students Explore

Science in YES

Congratulations to Brian Hamilton, one of our graduating seniors! We are happy to note that this year boasts one of the largest numbers of graduates since the induction of Youth Exploring Science (YES).

Brian came to the program 4 years ago, referred by Adams Park Community Center, and we have watched him grow into a mature and responsible young man. He not only participates in the Learning Labs on Saturday mornings, but works during the week to teach Science to children learning English as their second language.

During the summer program this year, Brian participated in the "YES Action News" component, a section of the program that allowed the teens to use their writing skills to produce newsletters and other media to showcase the YES program. The teens attended daily workshops where they learned how to write articles and manipulate digital data. After the summer ended, Brian continued to use the skills he had gained to help the staff with their digital pictures and video presentations during the week.

Brian is considering becoming a teacher once he graduates from college. Although the staff here at the YES program are thrilled by his choice, we know that Brian will excel at whatever he decides to do, now or in the future. His thoughtful ways have made him popular among his fellow teens, as well as helping him in his teaching tasks. We wish him all the best as he gets closer to graduation, and chooses which college he will attend.

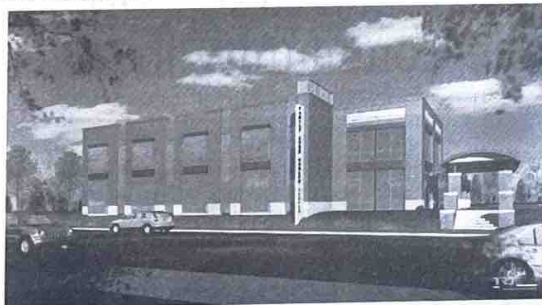
Make Your Mark at Family Care Health Center

Make your contribution last a lifetime at the new Family Care Health Centers in Forest Park Southeast when you purchase an engraved brick or an engraved paver.

Family Care Health Centers has provided excellent service in the St. Louis community since 1969.

From the first heartbeats of a pregnant mom's ultrasound to loving care to seniors, Family Care Health Centers provides affordable primary health care services to anyone.

Construction has begun on a \$3.2 million dollar new health center in the 4300 block of Manchester.



Be one of the first to make your mark on the walk. A portion of your donation is tax deductible.

The deadline to order is soon! Call Karen Berryman Harvey at 353-5190 right away to order your paver or brick and to help FCHC provide quality health care in Forest Park Southeast!

THE NEW TITANIC ARTIFACT EXHIBITION

Come Aboard Titanic at The Saint Louis Science Center

By Jason Baumgardner

On an April night in 1912, the world's largest ship, the Titanic, sank after colliding with an iceberg on her maiden voyage. The tragedy claimed more than 1,500 lives.

Now open at the Saint Louis Science Center, the internationally acclaimed *Titanic: The Artifact Exhibition* brings history to your fingertips.

Upon boarding the exhibition, visitors receive a boarding pass with the name of an actual passenger – an amazing opportunity to experience the ship in a very personal way.

Take a chronological journey through life on the Titanic – from the ship's construction to life on board. Experience passenger accommodations on board Titanic as you walk through authentically recreated first- and third-class cabins, with furnishings by the original manufacturer. You also have the opportunity to press your palm on an "iceberg" to experience the water's frigid temperatures the night Titanic sank.

This is the largest exhibition currently on tour, with more than 300 painstakingly restored artifacts – some never before seen – including the famed Grand Staircase.

Experience Titanic: The Artifact Exhibition at the Saint Louis Science Center through April 16. Adult tickets \$12, youth/seniors \$10. For more information call 289-4424 or visit www.slsc.org.

New I-64, cont.

Which houses or property will MoDOT be taking?

If we are buying your property, we have probably already spoken with you. Residents can expect to hear these details by early spring 2006. All property will be acquired by late 2006. If you haven't heard from us, you're probably in the clear.

Why does MoDOT keep referring to this highway as I-64? Most of us call it 40.

We like to think of this as a local highway, but Interstate 64 extends all the way from Virginia to the Daniel Boone Bridge in St. Louis County and serves six states. It was only in 1988 that our US Highway 40 became part of the Interstate highway system and became I-64 in Missouri.

The federal government is providing money to rebuild I-64, and that money comes from funds earmarked for interstate highway improvements. Future signage will reflect the change from US 40 to I-64.

For more information, see MoDOT's website for the project: www.thenewi64.org.

SLUH Gets Home-Field Advantage

Community Journal, Number 5, Spring 2006

excerpt from "SLUH News."

VISION 2000, St. Louis University High School's (SLUH) recent capital campaign primarily set out to preserve the academic excellence at the school, and the results have been impressive. SLUH has experienced significant increases in faculty and course offerings and a reduction in average class size, among other improvements. As the project now focuses on implementing campus enhancements, changes outside of the classroom are increasingly apparent.

The new baseball stadium - barring an unlikely setback - will be ready for use this spring. Not only will SLUH's baseball team be able to practice and compete on campus, they will enjoy a facility that is truly state-of-the-art. This stadium features grandstand seating for 450, two brick and concrete dugouts, natural turf, sophisticated irrigation and drainage systems, specialized infield dirt, stadium lighting, a press box, and a scoreboard and landscaping in the outfield area.

"Our team is very excited about the new baseball field," says Varsity Coach Steve Nicollerat. "It is a first-class stadium that will be convenient and fan-friendly, and I'm confident it will generate more excitement around our program. From a logistics standpoint, it will enable us to control our own schedule."

Just east of the baseball stadium will be the new track/soccer complex, which also - barring an unlikely setback - will be ready for the spring. The track team will now be able to host meets on its eight-lane, 440-meter, regulation-sized track (the existing track surrounding the football field is less than 400 meters). The new complex will feature high-quality, artificial turf on the soccer field, grandstand seating for 1,065 (in addition to hillside seating on a grassy knoll east of the field), dedicated triple/long-jump and high jump areas, a shot-put area and stadium lighting. Pole vault and discus facilities will be added this summer after the old parking lot is demolished.

"The new track facility represents a significant commitment to our program and is a testament to the generosity and support of the SLUH community," says Jim Linhares, varsity track coach. "We are extremely excited to begin using the new track. Just as exciting, we will now be able to host real track meets, something we were previously unable to do."

The plaza/pavilion area, located at the southern end of the SLUH/St. Louis Science Center Boulevard, is expected to be complete by the spring. This facility will include a drop-off/pick-up area immediately north of the building, the pavilion itself, and a very large plaza within the confines of the Athletic Complex. The pavilion will house track storage and restrooms, and include a large breezeway that can accommodate small functions and team meetings, as well as provide shelter during inclement weather. The plaza area will serve as a gathering place and social area for those attending athletic events and large outdoor school events in a comfortable and spacious setting.

Construction on the parking lot (in conjunction with the St. Louis Science Center) will begin after demolition of the final northern warehouse is complete this spring. This new parking area, which will include more than 600 spaces, is expected to be ready for use by mid-May.

After the relocation of utilities on Berthold is complete this spring, work will begin throughout the summer to widen and improve the existing street. This thoroughfare, which will include four lanes and a turnaround, will drastically improve traffic flow. Construction will also take place this summer to level and install grass on a new recreational field area, directly south of the redesigned street.

The third - and final - phase of VISION 2000 is expected to begin in 2007, when SLUH will embark on the building of a new student life center.



St. Louis University High School's new track and soccer complex with the baseball field in the back, to be completed this spring.

Upcoming Events

Community Journal, Number 5, Spring 2006

- ✓ **Operation Brightside Blitz** (March 18 @ 8 a.m. - 12 noon)
- History Booklet Presentation** (March 21 @ 6:00) - UMSL historians have put together a history of Forest Park Southeast. Join us to learn about our community's past!
- Home Buyer Seminar** (April 6 @ 6:00 - 9:00 p.m.) - Learn how to purchase your dream home. All income levels are invited. Call Barbara at 533-6704 to register.
- ✓ **Forest Park Southeast Summit** (May 6 @ 10:00 - 12 noon)
- Garage & Alley Sale** (May 13 & 14 @ 8:00 - 2:00 p.m.)
- ✓ **Bike Club Meeting** (April 12 @ 6:00 p.m.)
- ✓ **Landlord Association Meeting** (April 12 @ 6:00 p.m.)
- Grove Fest at Forest Park Southeast** (June 17 @ noon - midnight)
- Financial Planning Seminar** (July 18 @ 7:00 p.m.) - Ferguson Financial will host this seminar on saving and investing your money for the future.
- National Night Out** (August 1) - Our community annually celebrates National Night Out with block parties, cookouts, potluck dinners and more!
- Family Care Health Center's Ribbon Cutting Ceremony** (August 18 @ 4:00)
- Family Care Health Center's FPSE Friend Raising Special Event** (August 25 @ 6:00 - 9:00 pm) Be a friend of FCHC in Forest Park Southeast! A donation of \$50 per person gets you in the door, where you'll receive hors d'oeuvres, wine, beer, soda, bottled water and entertainment by the Ralph Butler Band.
- Back to School Blast** (August 26) - Help prepare students for the start of the school year. We will place containers around the neighborhood for you to donate needed school supplies.
- Pulse of St. Louis** (September 16) - The Pulse of St. Louis will bring together many different ethnic groups from our community to share their heritage through song, dance, poetry, clothing and more. We anticipate over 200 people to join us this year.
- House Tour** (September 23)
- Make a Difference Day** (October 28) - To celebrate this annual community event, we will continue the annual community clean-up and senior home repair; but in 2006 we will also host a social event. Plan to work hard for a few hours, and to play hard for a few more!



Regular Events

- Community Journal** (Quarterly) - The most complete source of information on our community. The Community Journals comes out in Mar., Jun., Sep. and Dec.
- Pocket Park Clean-up** (March thru August) - As neighbors, we need to step up and maintain our area parks. Organized clean-ups will include playground equipment, grounds, flowers and more.
- Forest Park Southeast Community Safety meetings** are held on the 4th Wed. of every month at 6:30 p.m. at Adams Park Community Center in the Norfolk room.



Irving Blue awards Sonda Thompson the raffle prize at the 17th Ward Holiday Party.

FPSE Development Corporation

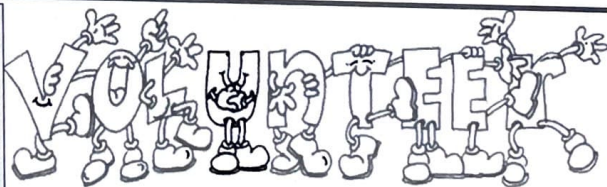
The Development Corporation is sponsoring many events over the next year, and we need your help! We need volunteers and committees. Call us at 533-7600 to volunteer at any of these projects: **Block Captains, Back to School Blast, Masquerade Ball, House Tour, Operation Bright Side, National Night Out, Pulse of St. Louis, Make a Difference Day, or Pocket Park Clean-up.**

Missouri Botanical Gardens

We're looking for all sorts of volunteers!

Children's Garden Adventurers volunteer as often or as infrequently as you like to help guide children and their families to all that awaits them in their journey. Training begins April 1!

Chihuly Volunteers will assist guests as they enter the Garden and share knowledge about the art installation and the glass-blowing process. All Chihuly Volunteers will attend an orientation on Chihuly and his art. Garden volunteers receive discounts on shopping and free admission to the Garden. Call Jackie Juras at 577-5187, e-mail her at jackie.juras@mobot.org, or visit the volunteer web page at www.mobot.org/volunteer.



FPSE Seniors

The **Seniors Program** is looking for volunteers. Program hours are Monday through Friday 9:00 - 1:00. Please call Myisa Whitlock at 633-7906.

Many thanks to everyone who contributed to this Community Journal!
Publication has been generously underwritten by
Washington University Medical Center &
St. Louis City Community Development Administration.