

# Community Journal

A publication for Forest Park Southeast and surrounding neighborhoods

Issue Number 6

Summer 2006

## The Gills Partner In Community Change

Forest Park Southeast is one of the city's most interesting and historic neighborhoods. During the years of general urban decline, Forest Park Southeast suffered more – and less – than many other neighborhoods. A large number of small businesses abandoned the neighborhood, but most left behind their empty storefronts as promises of future revitalization. Over the past several years, community-directed change has brought many new services to the neighborhood: reopened schools, better public transportation, more policing, and greater attention to replacing dangerous eyesore buildings and vacant lots with rehabilitated housing and newly constructed homes. Slowly but surely, Forest Park Southeast's residents are recovering our own history.

Two of the most enthusiastic proponents of reestablishing Forest Park Southeast's amenities are Amy and Amrit Gill of Restoration St. Louis. (*Restoration St. Louis continued on page 12*)



Before and After shots of an apartment renovated by Restoration St. Louis



## The Back to School Blast: A B C Please

By Jessica Castiglioni

**FREE SCHOOL SUPPLIES** for neighborhood kids!

Mark your calendars for The Back to School Blast on Saturday, August 26th from 11 am - 5 pm at the St. Louis Community Colleges at Forest Park.

The Back to School Blast will provide local children and their families with the tools they need both physically and mentally to begin the school year on the right foot. Kids who attend the blast will receive free school supplies as long as they last. The Blast will also feature a book sale, carnival games, inflatable bounce houses, obstacle courses, face painting, food, public safety information and more!

If your student received As, Bs, or Cs on his or her last report card, bring that report card to the Blast and receive free ride and game tickets.

For more information, or to donate your time and/or school supplies, please contact Barbara James at the Development Corporation office.

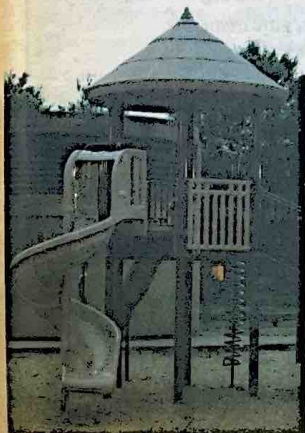
## Hudlin Park Update

By Irving Blue

For the past few months, a proposal by Barnes-Jewish Hospital to extend the current lease agreement with the city of St. Louis for a portion of Forest Park commonly known as Hudlin Park has been in the news. The extended lease would allow BJH to someday build hospital uses on the Hudlin Park site, and in exchange pay the city of St. Louis an annual lease payment of approximately \$1.6 million. This money would be used exclusively for maintenance within Forest Park. Hudlin Park is located east of Kingshighway, north of I-64 / Hwy 40, west of Euclid, and south of the hospital. It currently holds a playground, 6 tennis courts, 4 racquetball courts, and a walking trail as well as benches, picnic tables, and flower beds. There is an underground parking garage serving Barnes-Jewish Hospital and the hospital now pays the city \$150,000 a year in lease payments.

The discussion and controversy around the amended lease of Hudlin Park is a city-wide issue because of the potential loss of park land. As of the publication of this issue, it is unclear whether or not this lease agreement will be approved. To date, the Forest Park Advisory Board and the city Planning Commission have approved the amendment. The next phases of review are from the city's Board of Estimate and Apportionment (E&A) and the Board of Aldermen. Hearing dates have not been scheduled.

If the lease agreement is approved, Alderman Joseph Roddy has committed to Forest Park Southeast that several of the amenities will be relocated or replaced within Forest Park Southeast. A neighborhood planning committee has identified their expectations for the new equipment and park locations. Further updates will be published in the September issue of the Community Journal.





## News Out of The Development Corporation

by Jessica Castiglioni & Irving Blue

Please contact the Development Corporation for more information on any of the stories or topics listed below. Reach them at the office at 314-533-6704.

### National Night Out

On August 1st, neighbors nationwide will participate in National Night Out. This is a night to promote the safety of our streets. By joining together and coming out to festivities, we show the strength that lies in our community and forge bonds with neighbors and police personnel. National Night Out promotes crime and drug safety awareness and celebrates city living. There will be cookouts, block parties, and more. Please contact the Development Corporation Office to find out what your neighbors are doing!



### Community Corners

*Community Corners* are designed to increase community involvement through knowledge of upcoming events and services being offered to residents of the Forest Park Southeast (FPSE) community. Our *Community Corners* will be freestanding bulletin board kiosks placed throughout FPSE.

Research has shown that a physical feature, such as a community bulletin board, welcomes and invites residents to participate in the life of the neighborhood. It serves as one of many opportunities for residents in the neighborhood to interact with each other and build meaningful relationships.

This project was proposed by the graduate student interns at the Adams Park Community Center, Family Care Health Center, and the FPSE Development Corporation. These organizations will work together to maintain the *Community Corners*. Please contact any of these agencies if you would like to submit information to be posted. Look for the *Community Corners* to be installed this summer.

### Calling all Riders!

The Forest Park Southeast Development Corporation would like to sponsor a Bike Club for the Forest Park Southeast area, and we need you, the riders! It is our goal to provide start up support to neighbors who wish to tour our neighborhood and surrounding areas. We would also like to provide biking safety and educational seminars in conjunction with local nonprofits. Neighbors of all ages and biking experience are welcome. Our next meeting will be Tuesday, July 11th at 6pm at the Adams Park Community Center.

### The Community Journal - A Publication for Forest Park Southeast and surrounding neighborhoods

**Sponsors:** Washington University Medical Center  
Redevelopment Corporation,  
St. Louis Community Development Agencies,  
Forest Park Southeast Development Corporation  
**Editor:** Lynne Wymore Moo, Simple Solutions Consulting  
**Printer:** Arcade Printing

Advertising is now available! Please contact Jackie at the Forest Park Southeast Development Corporation for rates and submittal requirements. Reach Jackie at 533-6704 or [jroberson@fpsdc.org](mailto:jroberson@fpsdc.org).

The Community Journal is published quarterly. The next issue will be published in Sept. We welcome your submissions as articles, calendar events or letters to the editor. Email your submissions to [Lynne@SimpleSolutionsConsulting.org](mailto:Lynne@SimpleSolutionsConsulting.org) or call Lynne at 535-2748. Open submittal deadline is August 1st. The writer is responsible for the accuracy of any data, including times, dates, locations and particularly the spelling of names. The editor retains the right to omit or alter any material.

Please pick up additional copies of the Community Journal at the Forest Park Southeast Development Corporation office.

## Vanity Boutique

*Featuring the latest fashions for ladies,  
including Shirts, Dresses, Pants, Skirts and Jewelry.  
Extended sizes are available.*

Sun - Wed 11 am - 6 pm

Thur - Sat 10 am - 8 pm

Closed Mondays

1110 Tower Grove at Manchester

St. Louis, MO 63110

314-783-5555

Cash, Credit or Debit Cards accepted

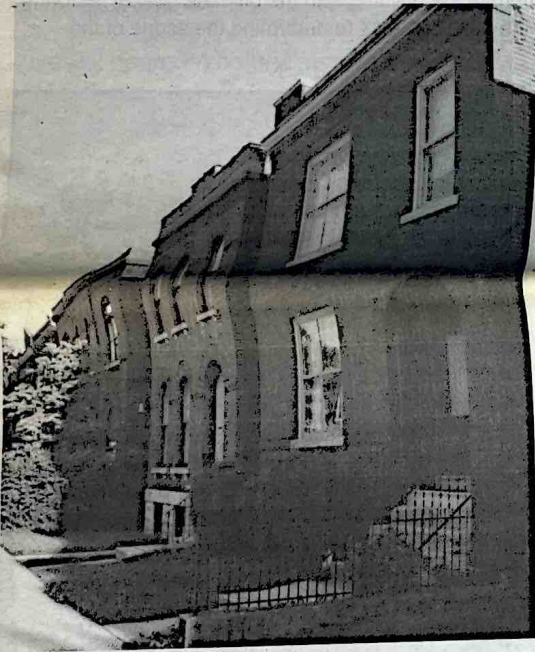




## Annual Home Showcase

The annual Home Showcase is quickly approaching on September 23rd. This year's event coincides with the first annual Grove Fest in Forest Park Southeast (see below). We're calling for homeowners in the Forest Park Southeast and Botanical Heights neighborhoods who are interested in showcasing their houses. Coupling this event with The Grove Fest, we are expecting record turn out and would love to include your home.

There will be music and refreshments provided, and a shuttle to take people to the Grove Fest. Tickets for the Home Showcase will be \$5. Last year's tour featured the Lofts at the Highlands, Lambskin Temple, McBride and Sons, the homes of your neighbors in Forest Park Southeast, an art exhibition featuring students from St. Louis Community College at Forest Park, and the sounds of local jazz musician Mr. Haywood Brownlee. We plan to make this year bigger and better! Let's show St. Louis why Forest Park Southeast is a great place to live, work and learn.



## Grove Fest in Forest Park Southeast

Mark your calendar - the Grove Fest has been rescheduled from June 17<sup>th</sup> to Saturday, September 23<sup>rd</sup> from 12:00 noon to 12:00 midnight. As the community's annual signature event, we welcome your participation. We will feature the Arch Rival Roller Derby Girls, a Schlafly Beer Garden, a Wine Garden, Artist Village and the Taste of the Grove. This will be a family event, and the planning committee has identified various outlets for both adults and children. Music, Music and more Music will be featured on two stages - all day and night.

Activities will take place along Manchester between Kentucky and Sarah Avenues (in The Grove). Please stay tuned - more information will be provided in the September issue of the Community Journal.

## Landlord Association

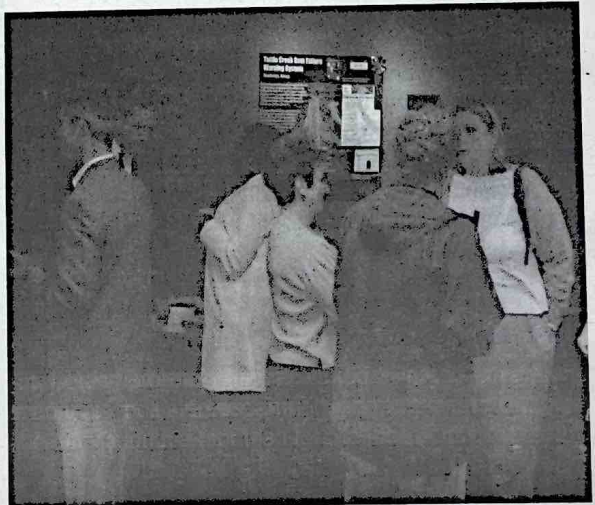
The Landlord Association was established to assist investment property owners with marketing of units, sharing resources and experiences, networking, improving the safety and security of your investment, and supporting the development of Forest Park Southeast. We are not a "Watch Dog" organization. As a new organization, we have drafted by-laws, elected our initial officers, proposed a series of activities and workshops, agreed to financial contributions, and will prepare a property description booklet. Our next meeting is scheduled for July 19<sup>th</sup> from 6 - 7 pm at Adams Park Community Center.

## Garage and Alley Sale

Did you sell all of your treasures during the first Garage and Alley Sale in May? If not, we are planning another Garage and Alley Sale for Saturday, August 19<sup>th</sup> from 8:00 am - 2:00 pm. The Forest Park Southeast Development Corporation will prepare flyers and purchase ads within local newsletters and newspapers to market this event. We request that you stop by the office to pick up flyers and post them at your schools, churches, places of employment and any other public venues. Our individual success is based on the collective efforts of the community. If you are interested in serving on the planning committee or have suggestions, please contact Barbara James at the Development Corporation.

## City Talk / Business After Hours

Want to know what is going on politically or in the business community? Join us on Friday, August 18<sup>th</sup> at Five, 4317 Manchester from 5:00 - 7:30 pm. Alderman Joseph Roddy will discuss the various development projects in the 17<sup>th</sup> Ward as well as many citywide issues. Additionally, meet business owners within our community and learn what they do and where their companies are heading. And of course, sample the fine food offered at Five - which opened in June 2006.





## Adams Park Community Center Youth Employment Program 17th Ward Beautification Project

By Myisa Whitlock and Laura Snell

The students working for the Adams Park Community Center (APCC) Youth Employment Program (YEP) have been busy with several projects in the Forest Park Southeast neighborhood!

In addition to neighborhood beautification projects around the community center and FPSE, the employees have taken on several tasks to better themselves and the community. YEP recently finished Thai Chi classes, that taught employees a great deal about balance and strength.

YEP employees participated in the Operation Brightside neighborhood cleanup, further showing the dedication that they have to their neighborhood.

The YEP has begun a new documentary about their program and the Forest Park Southeast neighborhood. The students are able to explore their creative sides while producing an informative documentary about the neighborhood in which they live and work.

The YEP has started a new project titled Project BLOOM, where they will paint the barricades on Manchester and fill them with flowers. The YEP has also volunteered to maintain the Pocket Parks in Forest Park Southeast. They now make weekly visits to each park. As school finishes for the year, hours and projects are extending for YEP youth, including:

- Neighborhood beautification projects
- Media Literacy - documentary production
- Field Trips to News Channel 9 and Webster University to learn media production
- Operation Brightside neighborhood cleanup day
- Attending community meetings
- Passing out flyers throughout FPSE
- Project BLOOM (Beginning Life Overcoming Obstacles on Manchester)
- Project ARC HIV/AIDS awareness classes
- Setting up Adams gym for games and meetings
- Gang awareness presentations
- Maintaining the Pocket Parks
- Thai Chi class

Community Journal, Number 6, Summer 2006



## A Look Inside 4300 Manchester

By Jenna Bauer

Potter's Workshop, an extension of the South City Open Studio and Gallery (SCOSAG), is a community based art facility located in the heart of the Forest Park Southeast neighborhood. Our goal at Potter's Workshop is to connect and strengthen families and the St. Louis community through offering affordable visual arts classes such as:

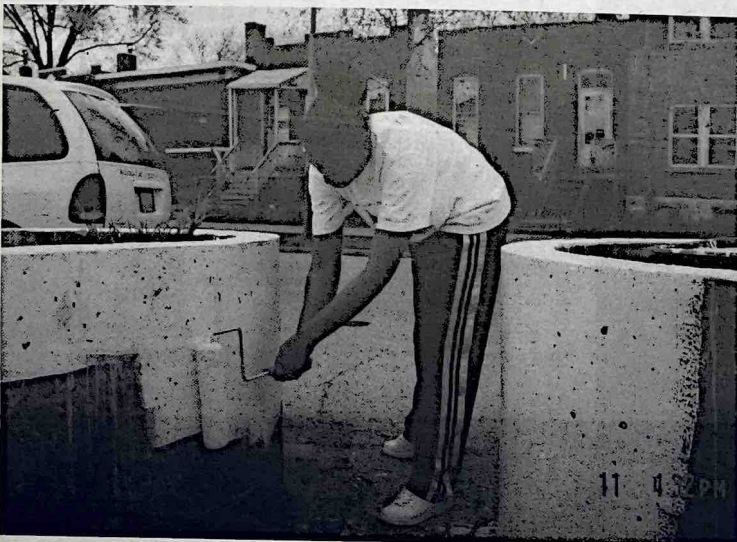
- Free after school and weekend visual arts programming for children in FPSE
- Family Nights with 1-3 families
- Adult & Kids' ceramics, painting, & drawing classes
- Parent/Child Pottery and Art Classes
- Community Open House Exhibitions
- Forming and fostering partnerships with other St. Louis not-for-profits such as APCC

Don't let the name fool you; Potter's Workshop offers an array of artistic outlets including Painting, Drawing, Sculpture, Bookmaking, Mixed Media and Ceramics.

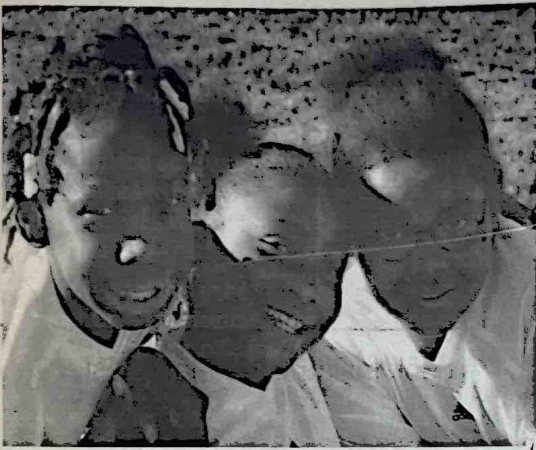
It is the mission of The South City Open Studio and Gallery and the Potter's Workshop to provide a safe and educational environment for children to explore the Arts and also to strengthen the ties within the St. Louis neighborhood, its families, and its youth.

SCOSAG is committed to serving the entire St. Louis community regardless of socioeconomic status by assuring accessibility to our programs for low-income and marginalized populations. SCOSAG has provided and promoted its Stone Soup Scholarship Fund since 2003.

For complete program information, please call us at 314-531-2448 or 314-865-0060. Or visit our website at [www.SCOSAG.org](http://www.SCOSAG.org).







## They Kick, Write & Serve... They SCORE!

By: Serena Muhammad

While most students at Adams Elementary were counting down the number of days until summer vacation, students in the St. Louis SCORES program were hoping for a few more days to play soccer and make a difference in their community. This past spring, students at Adams enjoyed a ten week program that blended the unique activities of soccer and nutrition education, creative writing and community service. Two days a week, students participated in literary activities such as an ABC Hike where they took a walking tour of the Forest Park South East neighborhood, constructed poems from their observations, and drew illustrated community maps to note assets and areas for improvement. Also, Adams students joined the other St. Louis SCORES teams for National Youth Service Day on April 22nd in the College Hill neighborhood.

St. Louis SCORES complements its focus on creative writing and service learning by introducing children to soccer and nutrition education as a strategy for physical fitness. Each Friday, teams from all four SCORES schools compete in soccer matches in preparation for the end of year Jamboree! soccer tournament.

Thanks to funding from the Washington University Medical Center Redevelopment Corporation, Thurtene volunteers, Forest Park Southeast parents, and community members, students at Adams Elementary had a great year in the St. Louis SCORES after-school program. Even with all of the support that the program has garnered over the past year, volunteers and resources are still needed. Please call Program Director Chinyere Oteh at 610-8835 to learn how you can be a part of the St. Louis SCORES family and ensure another great year for Adams Elementary School students.

St. Louis SCORES is an affiliate of America SCORES, a national 501(c)3 non-profit organization that serves thousands of urban, public-school children in major cities throughout the United States. Through its affiliates, America SCORES provides a national model for youth development - one in which the unique combination of soccer, poetry, and community service prepares children for success throughout their lives as students, citizens, and leaders. For more information visit [www.StLouisSCORES.org](http://www.StLouisSCORES.org).

## Ongoing Education

By Brian Werner

St. Louis Community Colleges at Forest Park continues to grow and thrive after 44 years of serving the community. The College currently employs 125 full-time faculty members and has about 7000 students on campus at any given time.

The College offers two-year associates degree programs which allow students to transfer to four-year institutions, and classes for continuing education.

Classes run in three terms: summer, fall, and spring.

"We are a community resource," says Mark Weber, Acting Executive Dean. "We offer classes from preschool through forever."

Two of the largest programs at Forest Park are Hospitality and Allied Health. According to Claudia Perry, coordinator of community relations, Forest Park offers 16 specialties in Allied Health, more than any other community college in the state.

CreativedotComm is the name of a unique program at the College that gives students real world experience while helping local not-for-profit organizations. In the program, Public Relations, Writing, and Graphic Design students produce web pages, brochures and other materials for use by not-for-profits at no



cost to the organization. In addition to classes on campus, the College also offers numerous other educational programs at locations throughout the city. Through these programs the College has built strong relationships with many

neighborhoods, including FPSE. Members of the College participated in last year's House Tour.

The Development Corporation is currently partnering with the Forest Park Campus to provide a scholarship to FPSE residents. Awards are available for full-time and part-time students at the College who are academically deserving, have financial need, and are residents of FPSE. For more info contact Barbara James at 533-6704 or [bjames@fpsecd.org](mailto:bjames@fpsecd.org).

You can find more information about the college at [www.stlcc.edu](http://www.stlcc.edu), or by phone at 644-9127.



## SLUH Construction to Continue Throughout Summer

Note: This article is from SLUH News, a publication of St. Louis University High School.

Work will continue this summer on the new portions of the campus being developed as part of St. Louis University High School's VISION 2000 Campaign. Construction will focus on completing the new student parking lot, developing the walkways between the parking lot and main building, and the new entry boulevard and student pick-up and drop-off area.

The new parking lot is nearly complete, and the final paving is underway. When finished, the lot will have 670 spaces in addition to handicapped parking. This parking complex is jointly owned and shared with the St. Louis Science Center. "Our two institutions have complimentary parking needs," commented SLUH's director of facilities Patrick Zarrick '77. "On school days, we need the parking space. On the weekends and during school holidays, the Science Center sees a surge in visitors and needs extra parking. This lot serves us both well."

The main entrance to the campus will shift this summer to Berthold Avenue. A wrought iron fence and ornamental gate will be installed at the southwest corner of the football field on Oakland Avenue that will serve as the main entrance to the campus. "The gate will make a strong visual statement," said Zarrick. "It will clearly say 'this is the entrance to St. Louis U. High.'"

The segment of Berthold from the gate to the entrance of the gym will become a four-lane access road, with a large circular turn-around at the entrance to the gym. A landscaped median will evenly divide the four lanes. When completed later in 2006, this turn-around will replace the faculty lot on Oakland Avenue as the school's main pick-up and drop-off.

The current senior parking lot, which is just across Berthold from the Backer Gym and the Schulte Theater, will be demolished and replaced with recreational green space.

"This is a key time," said Zarrick. "The whole orientation of the campus is changing with these construction projects. We're literally creating a new 'front door' for the SLUH campus."

## Tarlton Completes Athletic Track & Field Additions at Saint Louis U. High School

Tarlton Corporation, a St. Louis-based general contracting and construction management firm [located right here in Forest Park Southeast], recently completed the 17-acre addition to the St. Louis University High School (SLUH) soccer and baseball fields, track and field and associated athletic buildings. Additions included the press box, dugouts and a pavilion which consists of restrooms, soccer storage, field grooming and general storage. The concrete portion of the project featured the plaza, risers for the soccer and baseball bleachers and the retaining wall. This project, also part of the \$32 million St. Louis University High School Vision 2000 capital campaign, follows Tarlton's completion of the high school's football field improvements in 2004.

"We were very impressed with the work Tarlton completed," says Ted Hellman, trustee for SLUH and chairman of the building and grounds committee. "Tarlton's team did a very solid job for us, and we've been very pleased not only with the quality of the work, but the pace and its ability to coordinate the project and get things done."

With 1,000 students from over 80 zip codes, SLUH is one of the largest private schools in Missouri. Located in the city of St. Louis, the Jesuit-run school has been educating young men since 1818.

SLUH razed and crushed an abandoned nearby 58-year-old grocery warehouse prior to the new construction. All of the brick and concrete rubble was used as fill for the fields and parking lot.

Mackey Mitchell Associates, project architect, Stock & Associates Consulting Engineers Inc., civil engineer and Geotechnology, Inc., soil consultant, were integral to the team. In addition to Kovarik, other Tarlton team members include Brian Zurosky, superintendent, Rick Walkenhorst, concrete superintendent and Bryan Grate, project engineer.

Tarlton serves many major companies including AmerenUE, Monsanto Co. and Washington University. Among recent and current Tarlton projects are Washington University's Student Housing, the Pfizer, Inc. New Research Building and the Metro St. Louis MetroLink Cross County Extension, Segment I.



Bird's eye view of the improvements at SLUH

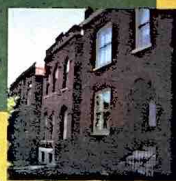




# 2005



## Annual Report



## Forest Park Southeast Development Corporation



This past year, we have witnessed a turning point in the Forest Park Southeast community. Whereas previously development has taken place sporadically, we are now seeing the systematic rehabilitation of residential and commercial properties throughout the community. This is largely due to the continued investment of the Regional Housing & Community Development Alliance (RHCD) as well as new large-scale residential and commercial investment by developers like Amrit and Amy Gill of Restoration St. Louis. Forest Park Southeast is now a community of destination for those who want to enjoy an evening out as well as those who want to purchase a home and stay for awhile.

Despite this astounding progress, there is a great deal of work left to do. With the help of the Washington University Medical Center Redevelopment Corporation, new development will go up on the land north of Chouteau between Tower Grove and Taylor. Several vacant buildings along Manchester will become homes to new restaurants and stores over the next year. At some point in the near future, a new interchange will be built at I-64 / Highway 40 and Kingshighway. We can sit back and watch all of this work going on around us, or we can get involved in making decisions that will affect our community for years to come.

I challenge each of us to get involved in making the Forest Park Southeast community a better place. Attend one of the many monthly neighborhood meetings. Volunteer to become a block captain. If nothing else, pick up a broom or a shovel and clean up the alley behind your home or business. These are the simple actions that make up a true neighborhood. Our community is going places. We want to make sure everyone is along for the ride.

Phil Minden, President  
of the Board



Stop... and notice in this very moment that today is very different from yesterday... and that tomorrow will be a new day as well. Your community is changing, and those changes are making Forest Park Southeast one of the most quickly developing communities in the region. Those of us who live and work here already know that Forest Park Southeast has everything a community needs within one mile of our central core at Tower Grove and Manchester: recreational and educational facilities, great homes, wonderful employment opportunities, and unparalleled access to transportation. These assets make it clear that our community really is a city within a city.

Look Around... and see all of the changes taking place before your eyes. You will see over 100 buildings that have been recently renovated, as well as new construction (both residential and commercial) on Oakland Avenue at the Highlands. You will see new athletic fields at Saint Louis University High School, a nationally renowned science museum at the St. Louis Science Center and new homes in Botanical Heights. You will watch a constantly improving infrastructure, and a stream of new residents and businesses becoming a part of the fabric of our community. And yes, you will see challenges – but I urge you to view those challenges as opportunities. Vacant buildings will become new homes and businesses; streets and alleys will be resurfaced; and regional transportation will improve with the reconstruction of I-64 / Highway 40. When I view all of our opportunities, I can't wait to see what the future will bring!

Get Involved... and ensure that our community becomes one of the top communities in the St. Louis region. We have all of the ingredients: established infrastructure, employment opportunities, recreation, housing, commerce, and a talented pool of people.

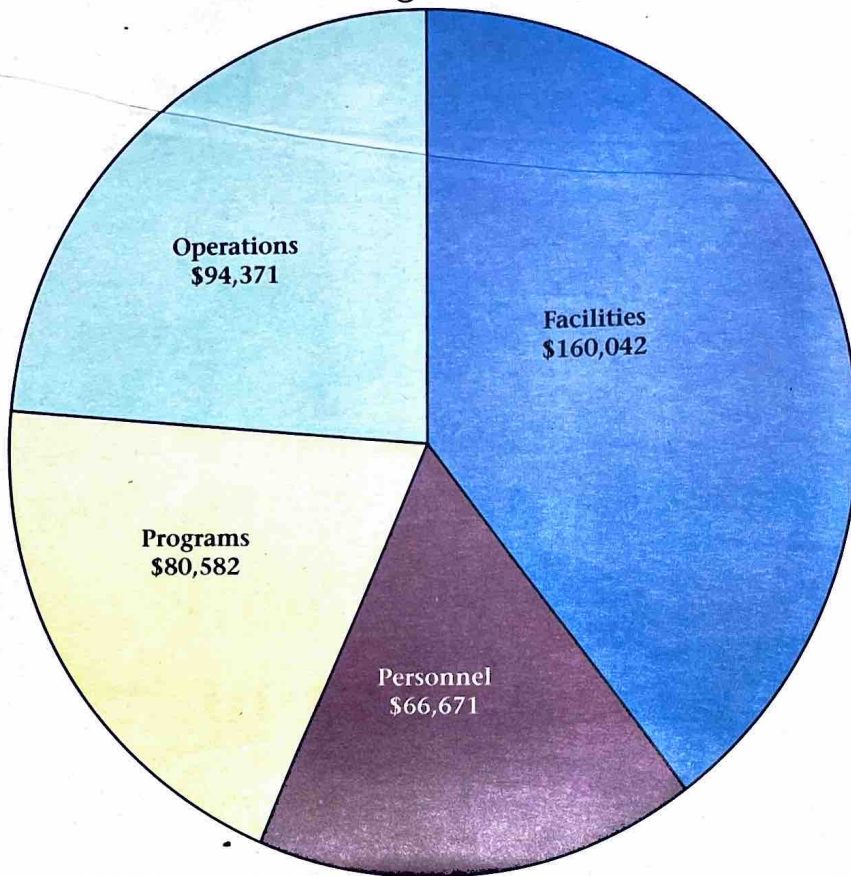
Stop and Look Around at all of the exciting things happening in Forest Park Southeast, and then Get Involved in this exciting community!

Irving Blue, Executive Director



# 2005 Actual Expenditures

## Total Budget: \$401,666



### Current Programs:

At the Forest Park Southeast Development Corporation (FPSEDC), we root our programs in our mission and we work to facilitate the growth of the Forest Park Southeast community. We focus our efforts around working with residents, business leaders, and external stakeholders to improve the community where we live, work, play and learn. The programs listed here are ongoing and annual programs for 2005 and 2006, both completed and projected. This is not a comprehensive list. For more information, please feel free to contact our office at 314-533-6704.

#### Signature Programs:

- Landlord Association
- Block Captains
- Back to School Blast
- Home Showcase
- Operation Brightside
- Make a Difference Day

#### Redevelopment Projects:

- Park East I, Park East II, Park East III (C.O.N.E.C.T.)
- Manchester Avenue Redevelopment: streetscape & infrastructure improvement
- Good Neighbor Agreement
- Manchester East Parking Lot
- Assist developers with questions, planning and implementation of projects

#### Marketing and Promotion:

- Community Journal quarterly newsletter
- Coordinate media involvement in the community
- Host website with community calendar and information
- Community Corner bulletin boards
- Forest Park Southeast Summit

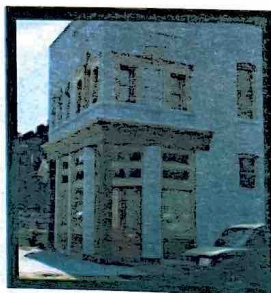
#### Government Assistance:

- Recommend and schedule infrastructure improvements
- Recommend zoning issues and the use of tax abatement and LRA property
- Assist with annual budget allocation
- Bi-weekly updates and reports to the Alderman

#### Park East III:

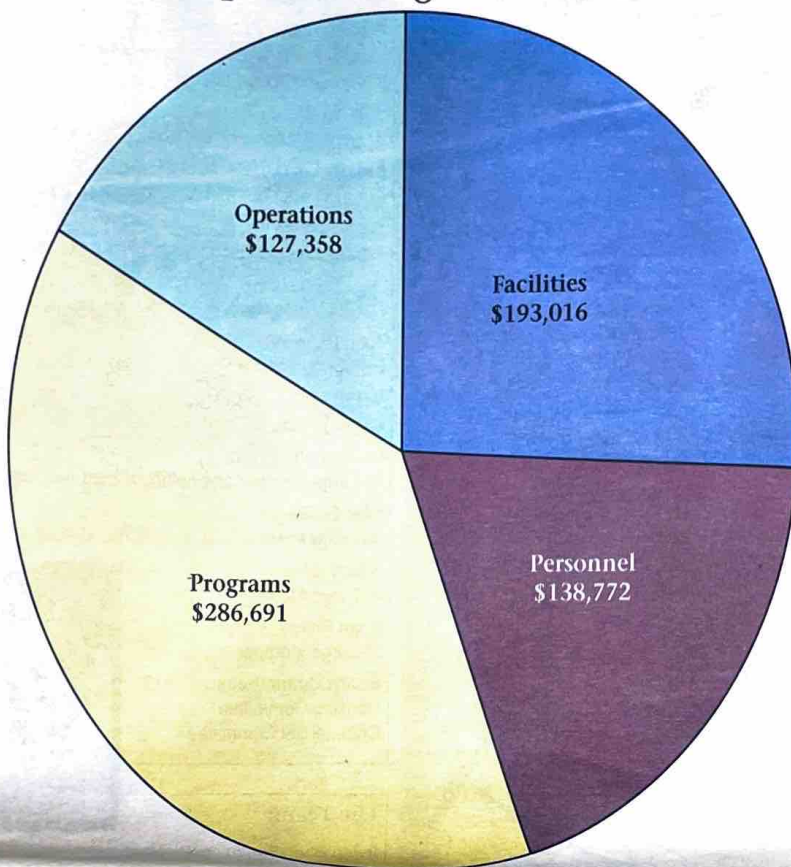
FPSEDC and RHCDA are co-sponsoring Park East III as part of a sustained effort to attract continued community development investment to the neighborhood.

Park East III identified thirteen historic buildings as key locations for redevelopment. Each building was vacant, abandoned, and in severe disrepair. When finished, Park East III will have created 27 high quality, attractive units and dramatically improved the physical environment of the neighborhood. A wide range of units will be available including one, two and three bedroom townhouses as well as garden apartments.





## 2006 Projected Expenditures Proposed Budget: \$745,837



### Community Services:

- Beautification projects such as Make a Difference Day, Operation Brightside and community gardens
- SafeHome Initiative
- Senior Home Repair Program
- Develop capital needs analysis
- Arrange clean ups of neighborhood public parks
- Facilitate public involvement and inform residents through publications such as the Community Journal
- Maintain information like the Contractor List, the For Sale List, and the Business Directory
- Financial Planning Seminars
- Home Buying Seminars
- Community Corners
- Forest Park Southeast Summit
- Assist local leaders, such as the Alderman, on public infrastructure improvements
- Identify public improvements
- Maintain list of vacant buildings and identify strategies for redevelopment

### Home Showcase:

FPSEDC hosted the annual Home Showcase featuring properties in Forest Park South. FPSEDC, in conjunction with other community leaders including McBride & Sons Homes, Lofts at the Highlands, Lambskin Temple Apartments, the Garden District, and St. Louis Community College at Forest Park provided participants with a feel for what it is like to live in the areas of Forest Park Southeast, Botanical Heights, and the Highlands. Coupled with the 2005 House Tour was the Taste of Forest Park South, which featured food from several area businesses, an art exhibit showcasing artists from SLCC art classes, a music performance by local jazz musician Mr. Haywood Brownlee, and a housing resource fair which included local real estate agents and organizations providing information regarding home purchases. The Tour covered 20 homes & 15 apartments.

### 39 Properties LLC (for profit-company):

- Real Estate Transaction Brokerage
- Property Management



### Special Events:

- National Night Out
- Back to School Blast
- Pulse of St. Louis
- Home Showcase
- Science Masquerade Ball
- Garage and Alley Sale
- The Grove Fest at Forest Park Southeast

### Operation Brightside:

For the last several years, FPSEDC has joined with Operation Brightside in support of their annual Operation Brightside Blitz Day in the spring. FPSEDC acts as a team leader for the surrounding areas, facilitating the cooperation of local residents, business leaders, and community groups to beautify public areas. This year FPSEDC staff and volunteers worked on cleaning up alleys and streets in both Forest Park Southeast and Botanical Heights. Participants cleaned up approximately 700 trash bags worth of garbage and debris that day.



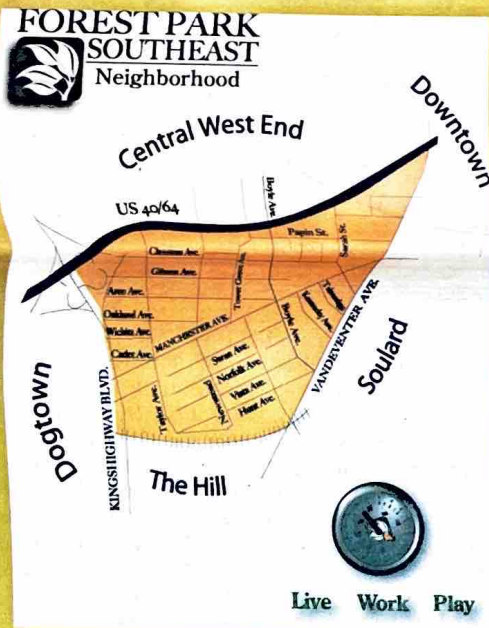
## Forest Park Southeast History:

The Forest Park Southeast (FPSE) neighborhood has undergone many changes over the years. Originally, the area was known as Rock Spring, named for the large spring that was the principal source of the Mill Creek. Rock Spring drew a large crowd from the central city and became a resort where they could get away from the urban grind.

The neighborhood was developed primarily at the turn of the 20th century, and originally marketed as the city's first "subdivision", popular because of its convenient proximity to downtown and industry. Many of the houses were built before 1915, with infill occurring ever since. Commercial development occurred primarily between 1930 and 1950.

The name Forest Park Southeast was adopted in 1989 when the official boundaries became Interstate 64 / Highway 40 on the north; Kingshighway Boulevard to the west; the Missouri Pacific Railroad Tracks on the south; and Vandeventer Avenue to the east.

These days, Forest Park Southeast is located in the center of the city of St. Louis, and is again an up and coming neighborhood. In the year 2000, this racially and economically diverse community was home to approximately 3,700 residents. FPSE comprises the four distinct neighborhoods of Adams Grove, Gibson Heights, New Boyle and Ranken East. As a whole, FPSE has more than 2,000 residential units - apartments and single-family homes - and 170 commercial and industrial buildings.



## Members of the Board of Directors:

Phil Minden, President  
At-Large Member and neighborhood resident

Guy Slay, Vice President  
Representing the Business Association of FPSE and neighborhood resident

Sandra Moss, Treasurer  
Representing the New Boyle Improvement Association

Craig Nashville, Secretary  
At-Large Member and neighborhood resident

Sonda Thompson  
Representing Gibson Heights Neighborhood Association

Daniel Corbin  
Representing Ranken East Improvement Association

John Saunders, Jr.  
Corporate Member

Rebecca Diekemper  
At-Large Member and neighborhood resident

LaRhonda Garrett.  
At-Large Member and neighborhood resident

Chip Schloss  
At-Large Member and neighborhood business owner

Sandy Cline  
At-Large Member

Brian Philips  
At-Large Member

**Board Committees:**  
Housing Committee  
Commercial Committee



## The Team:

Irving Blue, Executive Director

Irving Blue graduated from Alabama A&M University, summer 1997, with a Master of Urban and Regional Planning concentrating on Housing and Economic Development. With 10 years of experience in the fields of real estate development, social planning, and public sector funding, Irving was hired as Executive Director for the Forest Park Southeast Development Corporation in April 2003. As Executive Director, he is responsible for organizational management (annual operating budget of \$750,000 and assets of \$8 million) and community revitalization initiatives.

Barbara James, Project Manager

Barbara is responsible for coordinating special projects from concept to completion by engaging in activities and offering expertise using the extensive resources of the organization. She is an active member in her community, supporting activities such as Habitat for Humanity, the YMCA Emerging Leader Program, and Professional Organization of Women. In addition to her work responsibilities, Mrs. James completed her Master of Arts at Webster University in the summer of 2006.

Ralph Martinez, Operations Manager

As the Operations Manager, Ralph's duties include meeting the needs of the tenants of the Development Corporation's owned or managed properties. Ralph has served this neighborhood in various capacities over the past 5 years while working for Adams Elementary and the Adams Park Community Center.

Jacqueline (Jackie) Roberson, Bookkeeper

Jackie has been in this position since September 2005. Her job consists of Accounts Payable/Receivable, but she happily assists in other areas as needed. She brings customer service and finance experience to the Development Corporation. She attended Forest Park Community College and Flo-Valley Community College with an emphasis in Business.

Interns, Practicum students and Volunteers

We rely on all of our volunteer workers - we couldn't do everything we do without you! *Thank you!*

**FOREST PARK  
SOUTHEAST**  
Development Corporation

Address: 4471 Arco  
St. Louis, Missouri  
63110

Phone: 314-533-6704  
Fax: 314-533-6501

Email: [FPSEDCInquiries@FPSEDC.org](mailto:FPSEDCInquiries@FPSEDC.org)  
[www.FPSEDC.org](http://www.FPSEDC.org)



## Crime Victim Advocacy Center

By Jessica Vick

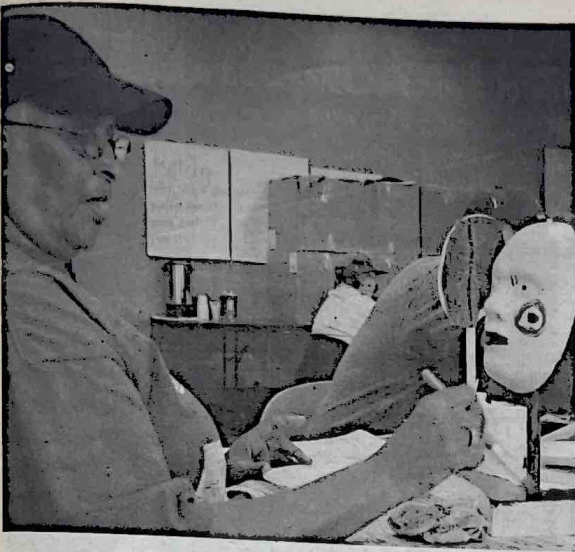
Every year, tens of thousands of crimes are committed in St. Louis. Every one of those crimes has a victim, usually more than one. Crime can affect spouses, children, friends, and coworkers of victims, too. The effects of crime can be numbing, frightening, maddening, or any number of other emotions all at once.

No victim deserves these feelings and no one should have to deal with them on their own.

The Crime Victim Advocacy Center of St. Louis (CVAC) has been serving victims for over 30 years. Crime creates a variety of needs and the problems resulting from the crime vary widely from person to person. Staff members assist clients in identifying their needs and then try to match those clients with services available to the community. The counselor at Crime Victim Advocacy Center will see clients, including family and friends of victims, for up to 12 sessions of free counseling. CVAC's Outreach Specialist meets with community and professional groups to discuss victim issues, victim services, and victims' rights. All of CVAC's services are free of charge. The agency believes that victims of crime have already paid enough and that they should not have to pay for services.

CVAC aims to provide some sense of justice for the nearly 80 percent of criminal cases that never reach the stage of arrests, trials, and prisons. For those victims, justice may come through receiving compensation for a funeral bill, having someone to listen to their story, or finding a resource in the community to help with a particular problem created by the crime.

If you or anyone you know has been a victim of crime, call 911. Then call Crime Victim Advocacy Center's 24-hour hotline at 314-OK-BE-MAD (314-652-3623). If you have not been a victim of crime but would like more information, reach CVAC at 314-652-9771.



## Adams Park Senior Program at McCormack House

By Myisa S. Whitlock

This program provides a vital opportunity for the senior citizens within the 17<sup>th</sup> Ward to build relationships and engage in learning opportunities.

A hot meal is served daily. Seniors who are unable to leave their homes may also request that their meals be delivered daily. Activities at the center include exercise, gentle yoga, health screening, nutrition education, card games, bingo, and arts & crafts provided by The South City Open Studio and Gallery (pictured above). Future activities will include monthly birthday parties and day trips. You can also call the senior center for service referrals and information.

Seniors who plan to attend must sign up by noon at least one day in advance by calling Myisa at 633-7906. Transportation is available. Services are offered free of charge, but contributions are appreciated. The suggested contribution varies depending upon the service. Services are provided regardless of a person's ability or willingness to pay.



## Barbara James Recognized as an International "Emerging Leader" Finalist

Local businesswoman Barbara James was recognized by eWomenNetwork, the fastest growing membership-based women's business network in North America, as an "Emerging Leader" finalist. This international recognition came as a result of other businesswomen in St. Louis nominating her for this award in recognition of her outstanding leadership abilities, accomplishments and commitment to serving others.

"The Emerging Leader Femtor Award was established to recognize and encourage young businesswomen who give back to their communities and other women," said Sandra Yancey, Founder and CEO of eWomenNetwork Inc. and the author of the recently released book *Relationship Networking: The Art of Turning Contacts into Connections*.

"We call them 'Femtors' because they help other women succeed and thrive by investing their knowledge, skills, time, resources and insights. 'Femtoring' is the art and compassion of a woman helping another woman succeed and achieve her dreams," she added. "At only 24 years of age, Barbara James has already developed an exemplary track record of leadership, achievement and service."

Barbara James works for the Forest Park Southeast Development Corporation. We are very proud to have such an accomplished young woman on our staff. Congratulations, Barbara!



## Excite All of Your Senses at Five

By Brian Werner

A new fine dining restaurant called Five has just opened up in Forest Park Southeast.

The name Five refers to the actions of the senses: taste, smell, feel, see, hear. The creators of Five would like you to use each of these senses when visiting the restaurant.

"Anybody can go and get dinner. We want this to be a dining experience," said Manager Bryan Christman. He described Five as "an American Bistro with a European feel."

Chef Anthony Devoti said that he is excited to be opening the restaurant in FPSE because of the development and progress that is currently going on.

Five opened with regular hours June 12th. It is located at 4317 Manchester, just west of Tower Grove Avenue. Walk-ins are fine, but reservations are encouraged. When asked about a dress code, Christman replied merely, "Come as you are."

The restaurant offers a daily rotating menu. Some examples of menu items are chili-rubbed shrimp kabobs with watermelon and mint salsa, grilled asparagus risotto with parmesan and thyme, roasted beef tenderloin with celeriac and potato puree, and poached halibut with baby vegetables.



## Southern Cooking in the City

By Brian Werner

Since last fall, Sweetie Pie's at the Mangrove has offered city residents a taste of the South.

"We serve home cooking with a home-style atmosphere," says Robbie Montgomery. She says with no regrets that Sweetie Pie's uses, "lots of butter and sugar."

Food at Sweetie Pie's is served cafeteria style. Take your pick of fried chicken, pork chops, and other meats (oxtails on Thursdays, catfish on Fridays). You can choose from a number of different sides to accompany the main dishes: rice, macaroni and cheese, mashed potatoes, yams, okra, and others. Top off the meal with a piece of pie or cake.

Sweetie Pie's opened in October of 2005, taking over the location from the Mangrove Café. Montgomery decided to keep the Mangrove aspect of the name because of its connection to the location, Manchester and Tower Grove.

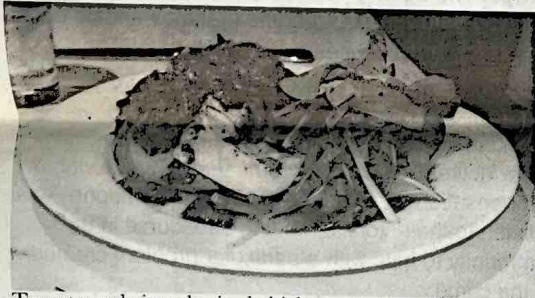
The Manchester location is actually the second Sweetie Pie's. The original, in Dellwood, has been in business for 10 years. Montgomery says that her customers pushed her to open the second restaurant. Tired of driving to the North County location, customers encouraged her to open the restaurant on Manchester.

Montgomery said that the neighborhood has been very supportive and "business has been fantastic."

Sweetie Pie's offers live music on Fridays from 12:00-2:00pm with Tony Simmons on piano and vocals.

Mention the Forest Park Southeast Community Journal at Sweetie Pie's in the next two weeks and receive a discount on your meal.

Sweetie Pie's is open 11:30am-8:00pm Tuesday-Sunday.



Tomato and citrus braised chicken with fingerling potatoes and arugula.

Five is open with a full lunch menu from 11:00am-2:00pm Monday-Friday. From 2-5pm Tuesday-Friday there is a condensed lunch menu. Dinner runs from 5-9pm Tuesday-Saturday. Happy Hour is Tuesday-Friday from 4-6pm.

To make reservations, or for more info call 535-5553.

taste


smell

feel

see

hear

chef anthony devoti  
announces the opening of  
his new american bistro



**NOW OPEN!**  
**INDULGE YOUR SENSES**

lunch • mon-fri  
dinner • tues-sat  
happy hour • tues-fri

4317 manchester • st louis, mo 63110  
314.535.5553 • www.fivesthmgrove.com



## Business Association of Forest Park Southeast/17<sup>th</sup> Ward

With the growth of the community, we want to make sure your voice is heard! We are a growing and unified membership organization that began in 1993 as the Wedge Group. The Business Association is committed to advancing the mutual interests of commercial establishments in Forest Park Southeast and the 17<sup>th</sup> Ward. Some of the benefits of membership include:

- A united voice for business development through representation on the FPSE Development Corporation board
- Help understanding how to meet city requirements
- Collective encouragement of patronage of local businesses (from both within and outside the neighborhood)
- A community environment conducive to business development
- Networking & information sharing opportunities
- Two general meetings during the course of the year with presentations from featured speakers
- Social gatherings
- Sponsorship of the annual Christmas seniors' lunch at St. Cronan's Parish Church
- Support of charitable causes and institutions (15% of the budget is allocated for charitable contributions)

The Board of the Business Association of Forest Park Southeast meets on the 2nd Wednesday of every month from 8:30-9:30am.

Now is a GREAT time to join us in our efforts, and let your voice be heard and strengthened! Currently we have 21 establishments - and growing - as active members of the Association. Join today and find out how together we can build a better community.

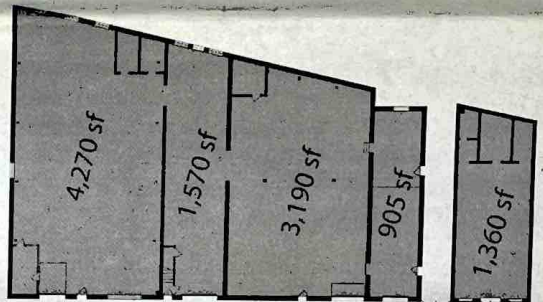
For more information on the Business Association, or to get involved, contact Jackie Roberson at the Development Corporation, 533-6704.

Now Available:

## 4191 Manchester

5 Great Spaces in the Heart of the City.

*High Ceilings and Wide-Open Plans  
make these spaces fantastic opportunities  
for Office or Retail!*



### Contact:

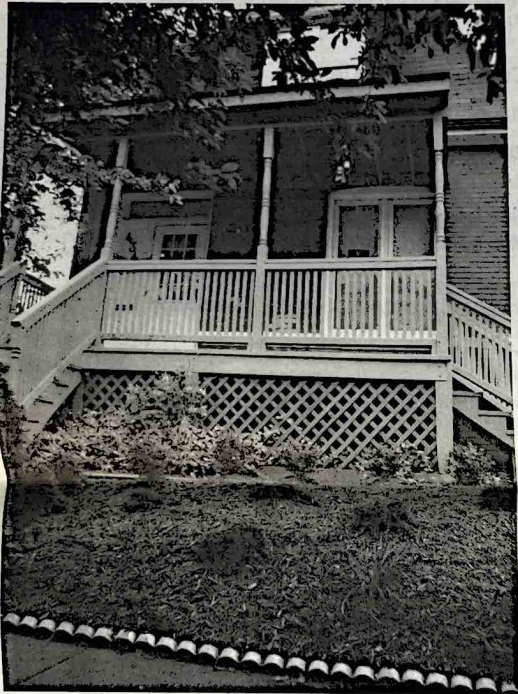
James, John or Tom Boldt  
1219 South Vandeventer Ave.  
Saint Louis, MO 63110  
Phone: (314) 531-2000  
Fax: (314) 533-9000



## Rebuilding Together a Success

On Saturday May 6th you may have witnessed a massive scale project that included large dumpsters, port-a-potties and hundreds of volunteers busy on the 4300 blocks of Gibson. This venture was a partnership between Rebuilding Together and Washington University Medical Center (WUMC).

Rebuilding Together, formerly Christmas in April, is a national organization that revitalizes neighborhoods in partnership with the community by rehabilitating the houses of low-income homeowners, particularly the elderly and the disabled, so that they may continue to live independently in comfort and safety. Volunteers came from the MasterCard Company of St. Louis.



Brian Phillips, Executive Director of WUMC and former board member of Rebuilding Together, was integral in bringing Rebuilding Together to Forest Park Southeast. Brooks Goedeker, Community Development Specialist for WUMC, assisted the residents on Gibson with the application process. "The 4300 block of Gibson has had some long time home owners that have held on and are committed to those blocks. We wanted to make sure that they received the necessary support to maintain their homes," Goedeker stated.

Allen Rowison, a resident participant, stated "The whole day was overwhelming. I had 25 people in and around my house cleaning and repairing. They were all so pleasant and it made me realize that there are people that want to make a difference, even if that means assisting a stranger with his home." Rowison received a newly landscaped front yard, patchwork for leaks, new floor tile, painted rooms, a kitchen table, a painted front porch, a vacuum cleaner and cleaning supplies, and assistance in cleaning out his basement. Rowison's was one of six homes on Gibson that participated in the day.

WUMC hopes that they can begin to target another block(s) in Forest Park Southeast for next year.

## Restoration St. Louis (cont. from p.1)

Pioneers themselves in the revitalization of the multicultural Skinker DeBaliviere neighborhood, the Gills seem to understand the importance of building upon a community's existing diversity and building stock, rather than replacing them with types of homes that price current residents out of their neighborhood.

Over the past year, Restoration St. Louis has bought more than 60 properties in Forest Park Southeast, most of them abandoned commercial buildings and vacant lots. Running contrary to the current condo craze, Restoration St. Louis has rehabbed empty buildings as rental apartments.

Their primary goal, says Amrit Gill, is to rebuild the existing neighborhood for its residents, rather than to "gentrify" it for newcomers.

"There will be some new faces, but we want our work here to be an example to other developers that a community's most irreplaceable strengths are its people and its buildings. With rare exceptions, displacement and demolition are better suited to theme parks than to neighborhoods," Gill said.

As proof of his intention, Gill notes that most of the more than 60 properties he and his wife have purchased have been vacant lots and shuttered buildings.

"We've bought the 'worst' ten percent of the neighborhood that no one else wanted," Gill said.

Over the next several months, the Gills say that they will concentrate on filling the commercial spaces and on preserving more of the neighborhood housing stock currently threatened by neglect and demolition. Already, popular Joe Boccardi's Catering and trendy Five restaurant are opening their doors in the neighborhood; and 02 Connect, a fast-growing Internet company, has begun unpacking its laptops and servers.

"Empty buildings and trashy lots are bad neighbors," Amy Gill said. "We're filling them up with great stuff."

Read more about Restoration St. Louis at [www.restorationstl.com](http://www.restorationstl.com).





## Operation Brightside

Members of the community came out both in Forest Park Southeast and Botanical Heights in support of Operation Brightside this past March.

Volunteers from the neighborhoods and surrounding institutions cleaned up over 700 bags of garbage. Streets were swept, alleys cleared of debris, trash cleaned along roadways and sidewalks, and much more. Everyone pitched in to help make the spaces in our community shine brighter. The Development Corporation served helpers breakfast and a BBQ lunch.

A huge thanks to everyone who participated! Don't miss your opportunity to help out next year! Working together, each of us is making our neighborhoods great places to live.



**UJAMAA MAK'TABA**  
THE AFRICAN CENTERED  
CULTURAL & ETHNIC  
BOOKSTORE

**COOPERATIVE ECONOMICS LIBRARY**  
Est. 1993  
UJAMAA MAK'TABA

North South

5108 Natural Bridge Blvd. 4267 Manchester Blvd.  
St. Louis, MO 63115 St. Louis, MO 63110  
(314) 383-8872 (314) 535-3238  
(314) 834-1786 Fax (314) 834-1786 Fax

email: info@ujamaabooks.com

**Renard Paper Company, Inc.**  
4465 manchester avenue . st. louis, MO 63110

**WE SELL & REPAIR VACUUMS**  
ALL MAKES & MODELS... RESIDENTIAL & COMMERCIAL

**314.371.4422**  
mention this ad for \$5 off your first order!!!

www.renardpaper.com  
since 1953

# Boldt BROTHERS

BUILDING MAINTENANCE

*Come Grove*  
with us in  
Forest Park  
Southeast!

## Mangrove Properties

Historically renovated properties,  
featuring:

- The Mangrove,  
an award winning building, with  
Vanity Salon & Boutique and  
Sweetie Pie's
- UX Unlimited,  
an unisex salon and tattoo & body arts center,  
**Coming Soon** to the newly renovated  
Melroy's Building.
- Commercial and Residential  
space for lease through FPSEDC

Proud to be a part of  
Forest Park Southeast  
and the vibrant  
Grove District



Have you heard of it? Located between Vandeventer and 39<sup>th</sup> street, Folsom and Lafayette, this modern development formerly held the name of Mcree Town. Once an area victimized by undesirable elements, this neighborhood has taken on a new personality and has brought new ideas, diversity and many other much welcomed changes to the area.

The Botanical Heights Neighborhood has organized an **"Interim-Board"** and will select officers by the summer's end. The following residents have taken a position on the Board to bring new perspectives, ideas, and approaches to issues that affect all who reside in Botanical Heights: Dell Breeland, Patrick Burke, LaWanda Davis, Amy Hilgemann, Jennifer Mysercough, Reverend Elmer Wilson and Joe Worth. Thank you.

The **"Thurman Underpass"** has been the center of some serious debate amongst neighbors within Botanical Heights. Neighbors are discussing having those barriers removed. Apparently, in 1985 an Ordinance from the City of St. Louis placed barricades on Thurman between Lafayette and DeTonty under the Highway 44 underpass. There are several neighbors who have very different viewpoints on the underpass and the removal of and/or maintenance of those barricades. A neighborhood forum will be organized to continue the discussion about the project and the pros and cons of opening the street. These meeting dates and times have yet to be determined. However, advanced notice will be offered to all neighbors.

As neighbors debate change, Botanical Heights continues to improve. Has anyone noticed the **alleys**? Alderman Roddy has provided a deliverable and begun to have the alleys in Botanical Heights paved. Residents will see all new alleys after the completion of the development. The neighbors of Botanical Heights thank Alderman Roddy for his commitment to the growth and development of our community.

**"Meet Me in the Middle"** will be hosted on Tuesday, August 1<sup>st</sup>. This **National Night Out** event is designed to heighten crime-drug prevention awareness, meet your neighbors, strengthen neighborhood spirit and showcase a safe and organized community. I want to extend a special thank you to everyone who has pulled together to ensure this event will be memorable and fun for all. There will be music, food, entertainment, and activities for all, so please come and participate.

The Forest Park Southeast Development Corporation will be hosting their annual **Home Showcase** on Saturday, September 23<sup>rd</sup>. Last year, McBride and Sons, Botanical Heights, The Highlands, and the Forest Park Southeast Community participated in this event showcasing their developments, rehabbed projects and private homeowners who each allowed participants to view their craftsmanship and development. This year a tour bus will transport participants to and from the various sites.

Botanical Heights has structured a **"Block Captain"** system to assist in disseminating information to our neighbors. Thank you to all who volunteered with this effort. The following lists the captains and their blocks:

Street	Block Captain	Captain's address
3900 Lafayette	Jason Waldmann	41xx Lafayette
4000 Lafayette	Jason Waldmann	41xx Lafayette
4100 Lafayette	Terrance Parchmon	41xx Lafayette
4200 Lafayette	Mark Parchmon	42xx Lafayette
4300 Lafayette	vacant	
3900 McRee	Jennifer Myerscough	39xx McRee
4000 McRee	Thom Glowski	40xx McRee
4100 McRee	Rev. Elmer Wilson	41xx McRee
4200 McRee	Lawanda Davis	42xx McRee
4300 McRee	Thom Glowski	40xx McRee
3900 Blaine	Joe Worth	39xx Blaine
4000 Blaine	vacant	
4100 Blaine	Amy Hilgemann	41xx Blaine
4200 Blaine	Maurice Banks	42xx Blaine
3900 Folsom	Constance Samuel	39xx Folsom
4000 Folsom	vacant	
4100 Folsom	Vicky Peterson	41xx Folsom
4200 Folsom	Amy Hilgemann	41xx Blaine

Note: some of the vacant areas are undergoing construction

Botanical Heights will participate in the **"Neighbors Naturescaping"** and **"Growing St. Louis"** projects offered by Operation Brightside. These grants, if awarded, will provide an array of perennials, annuals, bulbs, trees, and shrubs for the neighborhood. A committee is currently being put together to discuss a beautification plan for the whole neighborhood. (*Botanical Heights continued on page 15*)

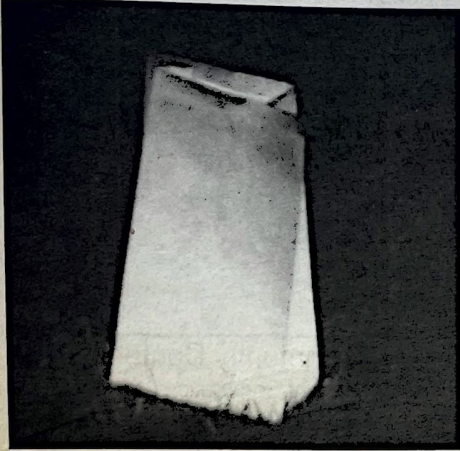


## Botanical Heights Neighborhood Lit Up Christmas Eve

By Kathleen Fields

Residents of the 3900 blocks of Folsom, Blaine, and McRee celebrated their first Christmas Eve in their new homes by lighting more than 2,000 luminaries along walkways and sidewalks of Botanical Heights. Channel 11 News aired a story about the luminaria display and featured its organizer, Jen Myerscough, on the 9 o'clock broadcast.

Participants look forward to continuing the tradition in December 2006.



## Block Captains Needed

The block captain's primary responsibility will be to work with their neighbors for the betterment of our community, while always treating them with courtesy, dignity and respect. That includes:

- Being an active neighbor in the Forest Park Southeast community and encouraging others to participate as well.
- Attending monthly block captain meetings and sharing information with your neighbors.
- Being a point person for residents on your block and linking them to available resources.
- Keeping an eye on the block, acting accordingly with everyone's safety and well-being in mind, and encouraging your neighbors to do the same.
- Welcoming new neighbors to the block, while encouraging all neighbors to get to know one another.
- Disseminating flyers, newsflashes, community newsletters and other publications of community activities.

Block captains are action-oriented individuals who use their observation, listening, communicating and problem-solving skills to work with their neighbors for the betterment of the community.

Those interested in signing up are encouraged to contact Barbara at 533-6704 or [bjames@fpsedc.org](mailto:bjames@fpsedc.org).

## Botanical Heights (cont. from p. 14)

Speaking of Beautification, the **17<sup>th</sup> Ward Youth Employment Program (YEP)** will be in the Botanical Heights Neighborhood on Fridays from 10am -12pm throughout the summer months assisting in our efforts to maintain the streets and alleys of the community. YEP offers youth from the 17<sup>th</sup> Ward the opportunity to engage in various personal, educational, and social development workshops and seminars. In addition, the program exposes youth to various professional environments and post-high school options. Please come and support these incredible young people as they invest their energy in our community.

As you can read, we have many exciting things taking place in Botanical Heights. I encourage any and all who wish to become involved in these and other projects to reach out to your neighbors and see how we can make our community the talk of the city. The next general meeting will be Monday, July 24<sup>th</sup> at 6:30pm at the Mullanphy Community Center.

Please contact Ralph Martinez at 533-6704 if you have any questions or comments.

## Sponsor Your Neighborhood

By Jessica Castiglioni

The Forest Park Southeast Development Corporation would like to take this opportunity to thank all of our current sponsors. These sponsors have made recent contributions to the successful programming of the Development Corporation. To add your business to the list, please contact Barbara James. Sponsors enjoy special recognition and promotion at events, free tickets, and special mention in Community Journal publications. If you'd like to become a Silver, Gold, or Platinum sponsor, please contact Barbara at 533-6704 today.

The following is a list of our sponsors in alphabetical order.

A & T Maintenance  
Commerce Bank  
Mangrove Restoration, LLC  
Restoration St. Louis, Inc.  
Schnuck's  
St. Louis Science Center  
Tartton Corporation  
Walsh & Assoc., Inc.

City TV 10  
Lipton Group  
Pepsi Co.  
Joseph Roddy, Alderman  
St. Louis Community College at Forest Park  
Sweetie Pie's at the Mangrove  
Ujamaa Maktaba



## Upcoming Events

Community Journal, Number 6, Summer 2006

- July 11 Commercial Committee Meeting, 5:00 at APCC
- July 17 Housing Committee Meeting, 6:00 at FPSEDC Offices
- July 25 Financial Seminar with Ferguson Financial  
6:00 pm at 4471 Arco, 2nd floor
- August 1 Open Submittal deadline for Fall Community Journal
- August 1 National Night Out
- August 8 Commercial Committee Meeting, 5:00 at APCC
- August 19 Garage and Alley Sale
- August 21 Housing Committee Meeting, 6:00 at FPSEDC Offices
- August 26 Back to School Blast  
1:00 am - 5:00 pm at Forest Park Community College
- September 11 FPSEDC Board Meeting, 6:00 - 7:30 at APCC
- September 12 Commercial Committee Meeting, 5:00 at APCC
- September 18 Housing Committee Meeting, 6:00 at FPSEDC Offices
- September 21 Town Hall Meeting, Time TBA at Forest Park Community College
- September 23 Annual Home Showcase Tour, 10:00 am - 2:00 pm
- September 23 1st Annual Grove Fest, 12:00 noon - 12:00 midnight
- October 10 Commercial Committee Meeting, 5:00 at APCC
- October 16 Housing Committee Meeting, 6:00 at FPSEDC Offices
- October 17/21 Make a Difference Day
- October 31 Science Masquerade Ball
- November 6 FPSEDC Board Meeting



Homeowners willing to add your house to the **Home Showcase** this fall. We will take care of all of the details, and you'll have a chance to show off your lovely home! Call Barbara at 533-6704.

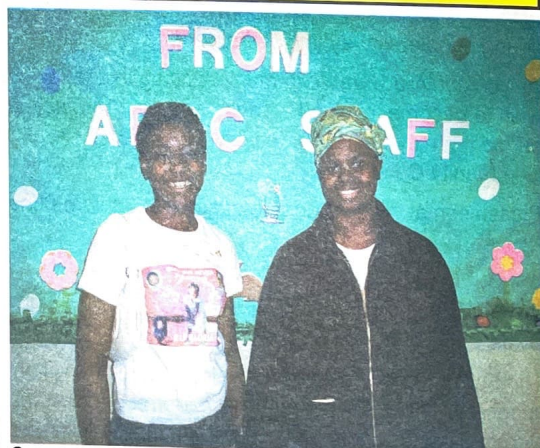
Seeking donations of **school supplies** for the Back to School Blast. Help a child in need start the school year off on the right foot! Call Barbara at 533-6704.

Now that you know about the SCORES program, why not get involved? Volunteer with kids in this successful **after-school program** at Adams Park. Call Chinyere at 610-8835 to learn how you can be a part of the St. Louis SCORES family and ensure another great year for Adams Elementary school students.

**Block captains** are action-oriented individuals who use their observation, listening, communicating and problem-solving skills to work with their neighbors for the betterment of the community. For those interested in signing up please contact Barbara 314.533.6704 or [bjames@fpsecdc.org](mailto:bjames@fpsecdc.org)

## Community Contacts

FPSE Development Corporation	533-6704
Adams Elementary School	535-3910
Adams Park Community Center	633-7900
Family Care Health Center	531-5444
Board of Aldermen	622-3287
Citizen's Service Bureau	622-4800
Problem Properties Hotline	622-3600
Refuse Department	353-8877
NSO, Luke Reven	589-8166



Congratulations to Tyaira Williams and Adrienne Lunceford, residents of Forest Park Southeast and winners of the raffle drawing for the FPSE Needs Assessment! Thanks to everyone who volunteered to fill out an assessment and share your thoughts about what's happening in your neighborhood!

Many thanks to everyone who contributed to this Community Journal!

Publication has been generously underwritten by  
Washington University Medical Center &  
St. Louis City Community Development Agencies.

This program is totally or partly funded through HUD and CDA.